

# Ariosh

## Oshe Honmi

### Main Installation Vessel (MIV)



#### Main Particulars

LENGTH OVERALL	120.168 m
LENGTH BP	115.36 m
BEAM	31.70 m
DEPTH	9 m
DRAFT RANGE	3.5 - 6.0 m
DEADWEIGHT	11,746.38 mt
CALL SIGN	3FKZ4
I.M.O NUMBER	8799645

#### Cargo Deck

STRENGTH	15 T/ m <sup>2</sup>
CLEAR AREA	1500 sqm
SHELTERED FREE AREA	600 Sqm + 150 Sqm
FENDERS	3 x Yokohama Pneumatic Fenders

#### Helideck

HELIDECK ARRANGEMENT	Yes - CAP 437 Compliant Helideck
AIRCRAFT TYPES	S92 and S61N Helicopter
"T" VALUE	12.8 T
"D" VALUE	22.2 M

#### Tonnage

GRT	18339 T
NRT	5,501 T

#### Engines

MAIN ENGINES	Non Propelled
MAIN GENERATORS	Caterpillar 8 X 994 E KW (1775 KVA / 60 Hz)
FUEL MANAGEMENT	Fuel Trax EFMS
EMERGENCY GENERATORS	1 x 751 KVA (601 KW) 440V /60 HZ

#### Tank Capacities

WATER BALLAST	1028.1 M <sup>3</sup>
POTABLE TANK	4100 M <sup>3</sup>
F.O TANK	2000 M <sup>3</sup>
DIRTY OIL TANK	52.3 M <sup>3</sup>
BILGE OIL TANK	70 M <sup>3</sup>
DAY TANK	40 M <sup>3</sup>
SETTLING TANK	45 M <sup>3</sup>
F.W COOLING TANK	200 M <sup>3</sup>
SEWAGE TANK	122.1 M <sup>3</sup>

#### Performance

MINIMUM OPP WATER DEPTH	9 m
MINIMUM OPP WIND SPEED	25 Knots
FUEL CAPACITY	1726 T
MINIMUM OPP FUEL ROB	100 T
F.O CONSUMPTION	2.5 MT/day

#### Communication Equipment

GMDSS EQUIPMENT	FELCOM-18
MANUFACTURER	Furuno RC
GMDSS SEA AREA	A3
VAST COMMUNICATION	V7 HTS, TRACPHONE

This specification is preliminary and subject to change without notice. Exact tank capacities, deadweight, deck cargo capacity and other figures that have been calculated and may change when the actual vessel is delivered.

#### Accommodation

CABINS/BERTHS	116 Cabins
VIP	6 Cabins
PASSENGERS	408 Persons
OFFICES	4 Offices
GENERAL MESS	270 Person Seating
OFFICERS MESS	40 person seating
Hospital Equiped With 5 Bed Spaces, Oxygen Cylinders, Stretchers And Other Medical Equipment.	

#### Main Crane

MANUFACTURER	SCM China
MODEL	SCM, 300 T SWL, man-Riding rated Crane
TYPE	Pedestal Mounted
POWER SOURCE	Hydraulic
YEAR BUILT	2014
CLASSIFICATION	ABS Class
DESIGN SWL	300 T SWL
CURRENT CERTIFIED SWL	300 T SWL
HOIST SPEED	25 M/Min
BOOM LENGTH	62 M
OPERATIONAL RADIUS	Minimum 11.2 M, Maximum 62 M
WHIP LINE RATING	5 T

#### Auxillary Crane

MANUFACTURER	SCM China
MODEL	SCM, 15 T SWL
POWER SOURCE	Elect/Hydraulic Slewing Gear
YEAR BUILT	2014
CLASSIFICATION	BV Class
DESIGN SWL	15 T SWL
CURRENT CERTIFIED SWL	15 T SWL
HOIST SPEED	17 M/Min
BOOM LENGTH	12 M
OPERATIONAL RADIUS	4.9 M to 12 M

#### Positioning and Winch Features

MOORING ARRANGEMENT	10-Point Mooring
MOORING WINCH TYPE	Electro-Hydraulic Power Pack
MOORING WINCH MAKE	Jebsen & Jessen Offshore Equipment Pte Ltd(Singapore)
WINCH DRIVE MEDIUM	Hydraulic Mooring Winch
ANCHOR TYPE	Delta Flipper Anchors
ANCHOR WEIGHT	12 T
ANCHOR/SEA MODE	4MT
ANCHOR OPERATIONS	8.5 MT

#### Work Boat/ Close Standby Rescue Craft

NUMBER	1 x 6 persons
MANUFACTURERS	Vanguard

#### Security Equipment

CCTV	More Than 15 Camera Installed In Strategic Locations
------	--

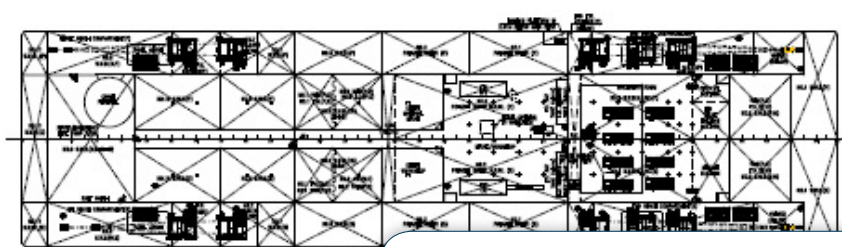
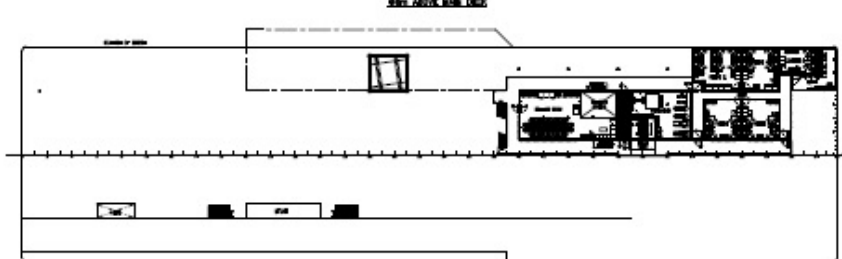
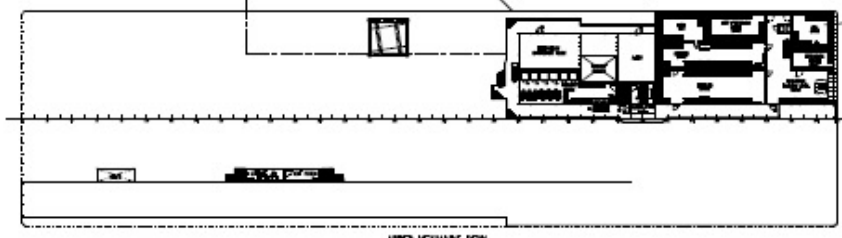
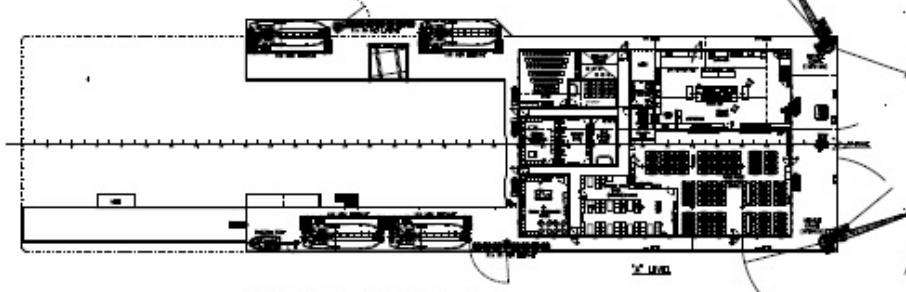
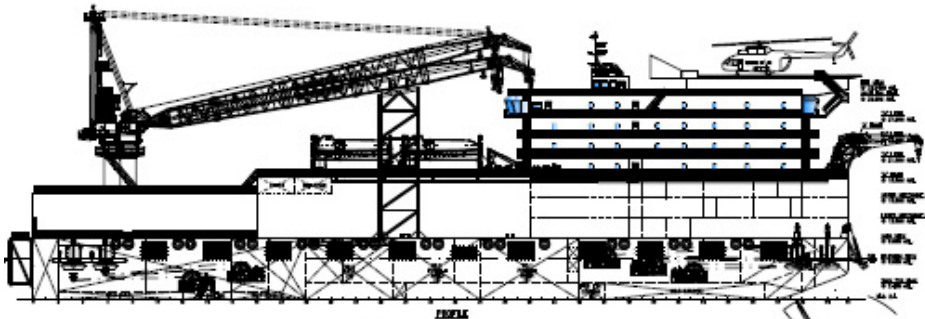
Main Installation Vessel (MIV)

Oshe Honmi

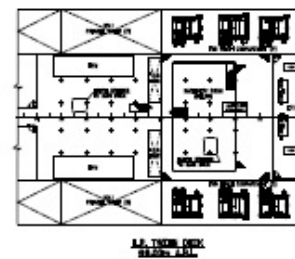
# Ariosh

## Oshe Honmi

Main Installation Vessel (MIV)



GENERAL NOTES	
1. ALL WORK SHALL BE IN ACCORDANCE WITH THE LATEST EDITIONS OF THE relevant standards.	
2. ALL MATERIALS SHALL BE OF THE BEST QUALITY AND SHALL BE APPROVED BY THE SUPERVISOR.	
3. ALL WORK SHALL BE COMPLETED WITHIN THE SPECIFIED TIME FRAME.	
4. ALL WORK SHALL BE COMPLETED WITHIN THE SPECIFIED TIME FRAME.	
5. ALL WORK SHALL BE COMPLETED WITHIN THE SPECIFIED TIME FRAME.	



1. ALL WORK SHALL BE IN ACCORDANCE WITH THE LATEST EDITIONS OF THE relevant standards.	
2. ALL MATERIALS SHALL BE OF THE BEST QUALITY AND SHALL BE APPROVED BY THE SUPERVISOR.	
3. ALL WORK SHALL BE COMPLETED WITHIN THE SPECIFIED TIME FRAME.	
4. ALL WORK SHALL BE COMPLETED WITHIN THE SPECIFIED TIME FRAME.	
5. ALL WORK SHALL BE COMPLETED WITHIN THE SPECIFIED TIME FRAME.	
<b>POET SHIPBUILDING &amp; ENGINEERING PTE</b> POET SHIPBUILDING & ENGINEERING PTE LTD SeaTech Solutions International (S) 408 MEN ACCOMMODATION BA	