



Construction Profile

Ariosh
We deliver.

Ariosh delivers Engineering, Procurement, Construction and Installation services to the Oil and Gas industry.

Ariosh has built an enviable and well established reputation backed by over 21 years experience in engineering, fabrication, construction, installation, hook-up and commissioning of onshore, offshore and subsea production facilities.



Improving your asset's safety, integrity, and profitability

Our construction services cover follow-on engineering to verify the IFC package, procurement of short-fall materials, fabrication and end-to-end construction project management.

We have the capacity to deliver major capital projects in the onshore, offshore and subsea market segments including the delivery of onshore modules, offshore platforms, SURF packages, pipelines and floating systems.

Our work processes are built around industry best practices for safety, quality, schedule and cost control that guarantee successful project delivery. We partner with industry leaders that provide complementary services to extend and enhance our capacity.



Execution Capabilities



Platform Revamp\Retrofit

We provide a broad range of Structural Revamp and Platform Maintenance services and are committed to providing safe, effective, and economical solutions for restoring these platforms to operate on optimum effectiveness



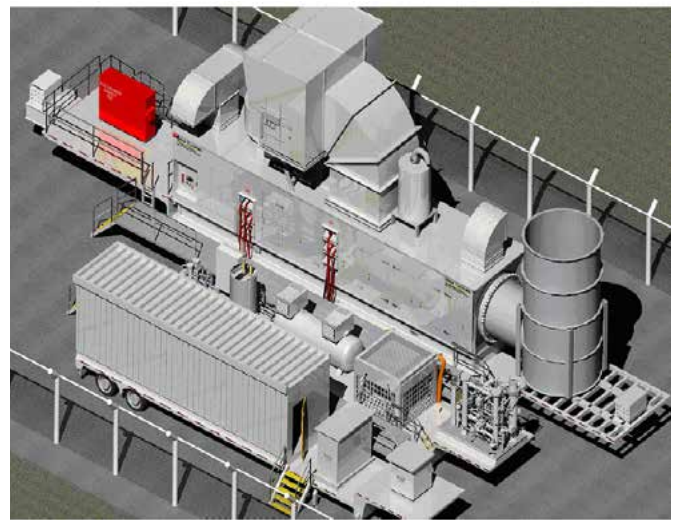
Heavy Lift

With extensive experience in heavy lift activities and a state-of-the-art installation vessel (Oshe Honmi MIV), Ariosh has uniquely positioned herself to successfully carry out heavy lift operations of any scale.



Hookup & Commissioning

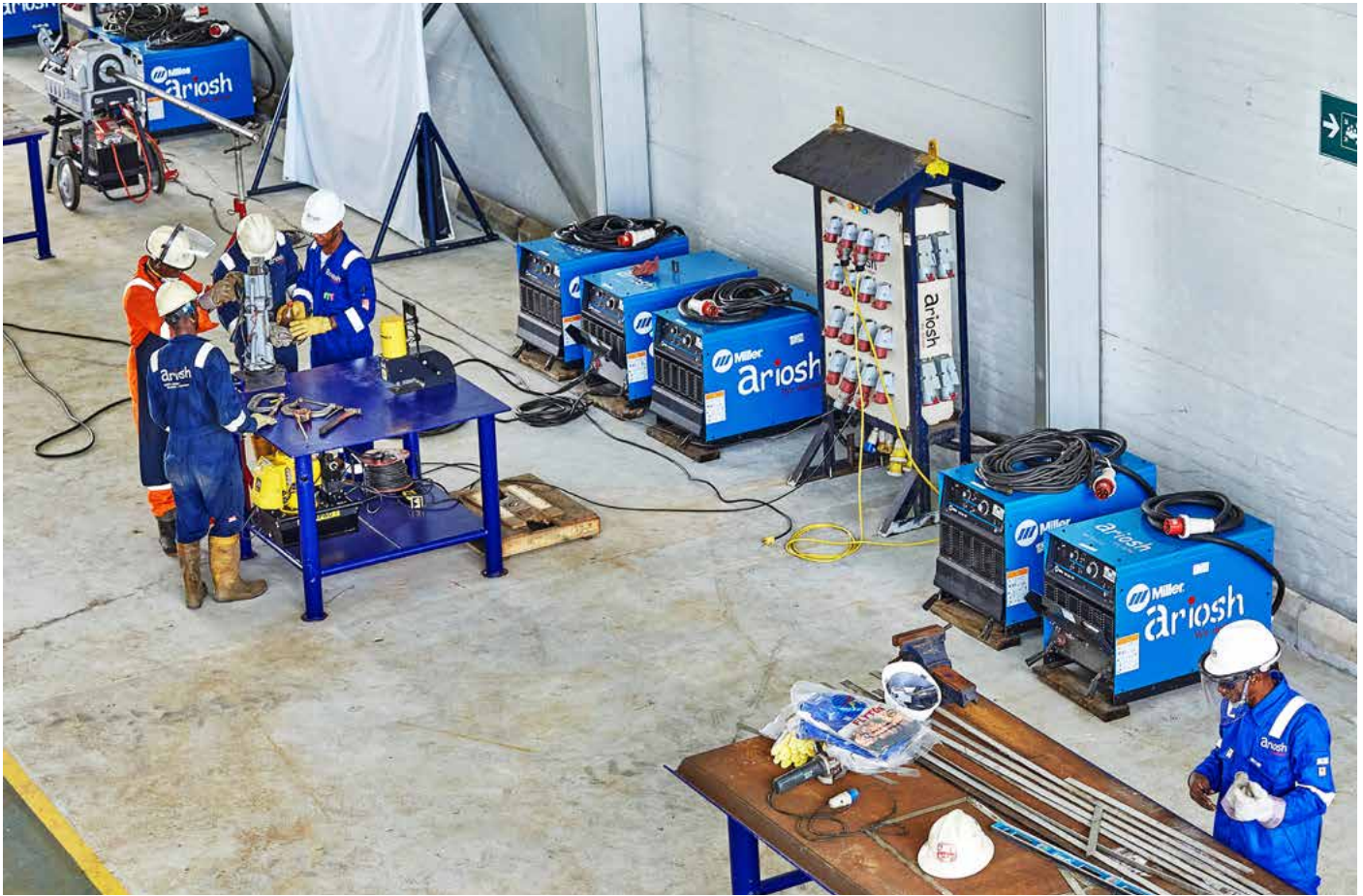
Ariosh conducts the recovery and hookup of mooring lines of Floating Production Storage Offloading (FPSO) and Offshore Loading Terminal (OLT) in different terrain and water depths using our fleet of Anchor Handling Tug Vessels (AHT).



Civil Construction

Ariosh provides a wide range of civil construction services from buildings and infrastructure projects to structural construction for offshore structures and facilities to ensure they perform as anticipated.

Fabrication Yard and Marine Logistics Base



Ariosh ultra-modern fabrication yard and marine base facility is capable of fabricating 15,000 metric tons of steel per annum when operating at full capacity. Located in Port Harcourt next to the Nigerian Naval Base and in close proximity to Saipem Yard, Ariosh yard occupies an overall area of 120,000 sqm with 20,000 sqm covered workshop, laydown area of 70,000 sqm and 40,000 sqm for other purposes. The 250 m long quayside of 11m draft makes it capable of carrying out major Load Outs.

Capabilities

- 15,000 metric tons of steel per annum.
- 120,000 sq.m overall area
- 25,000 sq.m overall laydown area
- 15,000 sq.m sit area
- 1,000 sq.m overall office area
- 70,000 sq.m of fabrication area
- 250m long quayside @ 11m draft
- 20,000sqm workshops
- 2 X 60mt overhead cranes per workshop
- Location: Rumuolumeni, Portharcourt, River State





Chevron Okan PRP Platform OML 91, Escravos Area, offshore Nigeria

Client

Chevron Nigeria Limited

Services

Loadout, Transportation and Installation using the Ariosh Oshe Honmi (MIV), Ariosh Oshe Rewo (AHTS), Ariosh Oshe 3 (AHT)

Vessels

- Ariosh Oshe Honmi (MIV)
- Ariosh Oshe Rewo (AHTS)
- Ariosh Oshe 3 (AHT)

Man-Hours

30,000

Safety

- Zero LTI

Status

Completed

Chevron Okan PRP Heavy Lift Project

Project Scope

The Okan PRP project scope of work was the Loadout, Transportation and Installation of;

- 140MT Slug Catcher
- 6MT Pig Launcher

Project Activities

- Loadout of Company Provided Items (CPI) from storage location at intels, Warri.
- Mobilization of Ariosh Vessel Fleet
 - Oshe Honmi Main Installation Vessel (MIV)
 - Oshe Rewo Anchor Handling Tug Supply Vessel (AHTS)
 - Oshe 3 Anchor Handling Tug Vessel (AHT)
- Barge tow to Escravos safe anchorage and Sea Trials
- Heavy Lift and Installation of Slug Cather and Pig Launcher

The entire scope of work was successfully completed within six days; from sea trials to the installation of the 140MT Slug Catcher and the 6MT Pig Launcher within schedule and zero LTI



Chevron Okan GGCP Platform OML 91, Escravos Area, offshore Nigeria

Client

Chevron Nigeria Limited

Services

Loadout, Transportation and Installation of Company Provided Items (CPI)

Vessel

Ariosh Oshe Honmi (MIV)
Ariosh Oshe Rewo (AHTS)
Ariosh Oshe 3 (AHT)

Man-hours

35,000

Safety Record

■ Zero LTI

Status

Completed

Okan GGCP Debottlenecking Project

Project Details

The project encompassed the loadout, sea-fastening, and transportation of new equipment, including installation engineering.

The Company Provided Items (CPI) that were installed include:

- 120mT TEG Package
- 37mT Lift Gas Contactor
- 35mT Lift Gas Separator (with access platform and ladder)
- 4mT Main Gas/Glycol Exchanger
- 2mT Lift Gas/Glycol Exchanger

Project Highlights

- Loadout of Company Provided Items (CPI) from storage location at Escravos.
- Mobilization of Ariosh Vessel Fleet
 - Oshe Honmi Main Installation Vessel (MIV)
 - Oshe Rewo Anchor Handling Tug Supply Vessel (AHTS)
 - Oshe 3 Anchor Handling Tug Vessel (AHT)
- Heavy Lift and Installation activities done safely

The project was successfully completed within schedule and zero LTI.



Exxonmobil EAP GX Platform offshore Nigeria

Client

ExxonMobil

Services

Engineering, Procurement, Construction, and Installation

Facilities

EAP GX Platform

Man-hours

633,333

Safety Record

- Zero LTI

Status

Completed

ExxonMobil Inlet Gas Exchanger Replacement Project

Project Scope

Engineering: Detailed design, construction sequencing, installation engineering for First-Time-Install of the IGE, piping and structural members

Procurement: Procurement and delivery of IGE, Pass 3 Separator, Valves, Bolts, Nuts and Gaskets, Strainer Seals & Baskets, Insulation materials etc.

Fabrication Scope

- Deck extension (88.5ft x 30ft) - 85 Tons
- Cross over stairway, access platform and installation aids
- E&I stands and supports
- Lifting beams
- Pipe supports
- Process Piping ranging from 2" to 36"
- Fabrication assurance and dimension control

Transportation and Installation: Loadouts, sea fastening, offshore transportation and installation.

ariosh

+234.803.900.5001 | +234.803.900.5055

info@ariosh.com | chartering@ariosh.com | bd@ariosh.com