

ariosh

VESSEL BROCHURE



OSHE 3



Overview

The Oshe 3 Anchor Handling Tug (AHT) Vessel is designed for Towing, Anchor handling as well as to carry out regular supply and support duties for offshore construction works.

The vessel is optimized for low fuel consumption through Hybrid diesel, electric and mechanical arrangement. It is well equipped, focusing on HSE and maximum safe protection for cargo and crew.

Class: ABS Class + A1 Towing Vessel + AMS+ AH + FiFi-1, DPS-1

Name:	Oshe 3
Owner:	Ariosh Ltd
Vessel Type:	72.2T Bollard Pull, DP1
Flag:	Panama
Port of Registry:	Singapore
Built:	2016
Keel Laid:	2014
Class Society:	American Bureau of Shipping (ABS)
IMO No:	9707326
Call Sign:	HO9146

Specification

MAIN PARTICULARS

Length Overall:	46.0m
Length (Moulded):	39.3m
Breadth (Moulded):	12.6m
Depth (Moulded):	5.3m
Operational Draft (Moulded):	4.3m
Max. Draft (Moulded):	4.5m
Deck Cargo / Deck area:	163 sq.m
Deck Strength:	5T/m ²
Gross Tonnage:	1072T, 321T NRT
Accommodation:	20Persons

MACHINERY

Main Engines:	2 x 3516C, 2575BHP
Main Generator:	3 x 300KWe ISSMXTA 11
Emergency Generator:	1 x CSMXT5.9, 112KWe
Bow Thrusters:	1x CPP Bow Thruster (approx. 45KN)
Propulsion:	2 x 1920kW
Steering Gear Motors:	2
Emergency Steering:	YES
Fuel Management:	Fuel Trax EFMS
Security:	CCTV with 360 Degrees Night Vision

ACCOMMODATION

1-man cabin:	4
2-Man cabins:	4
4-man Cabins:	2
Total:	20 men
Hospital:	1
Galley:	1

OPERATIONAL PERFORMANCE

Bollard Pull:	72.2 T
Min.Fuel Consumption:	In Port 1 M, At Sea depends deployment of ship
Max.Fuel Consumption:	17.2 MTS
Max.POB:	22
Fuel Capacity:	486.92 mt

COMMUNICATION EQUIPMENT

GDMSS Equipment:	Faruno
GMDSS sea area:	A3
VHF Portable Radio:	2 x Furuno FM-8900S
VHF Handled Radio:	x3 units Mcurmuro R5
PA System:	Hanshin HPA-7300-2
AIS Systems:	FA- 150 AIS
Navtex Receiver:	NX-700B Receiver

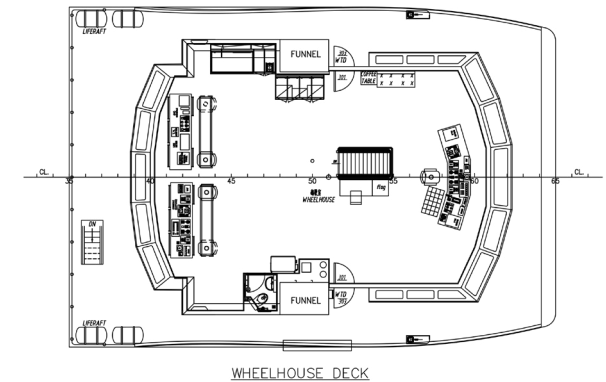
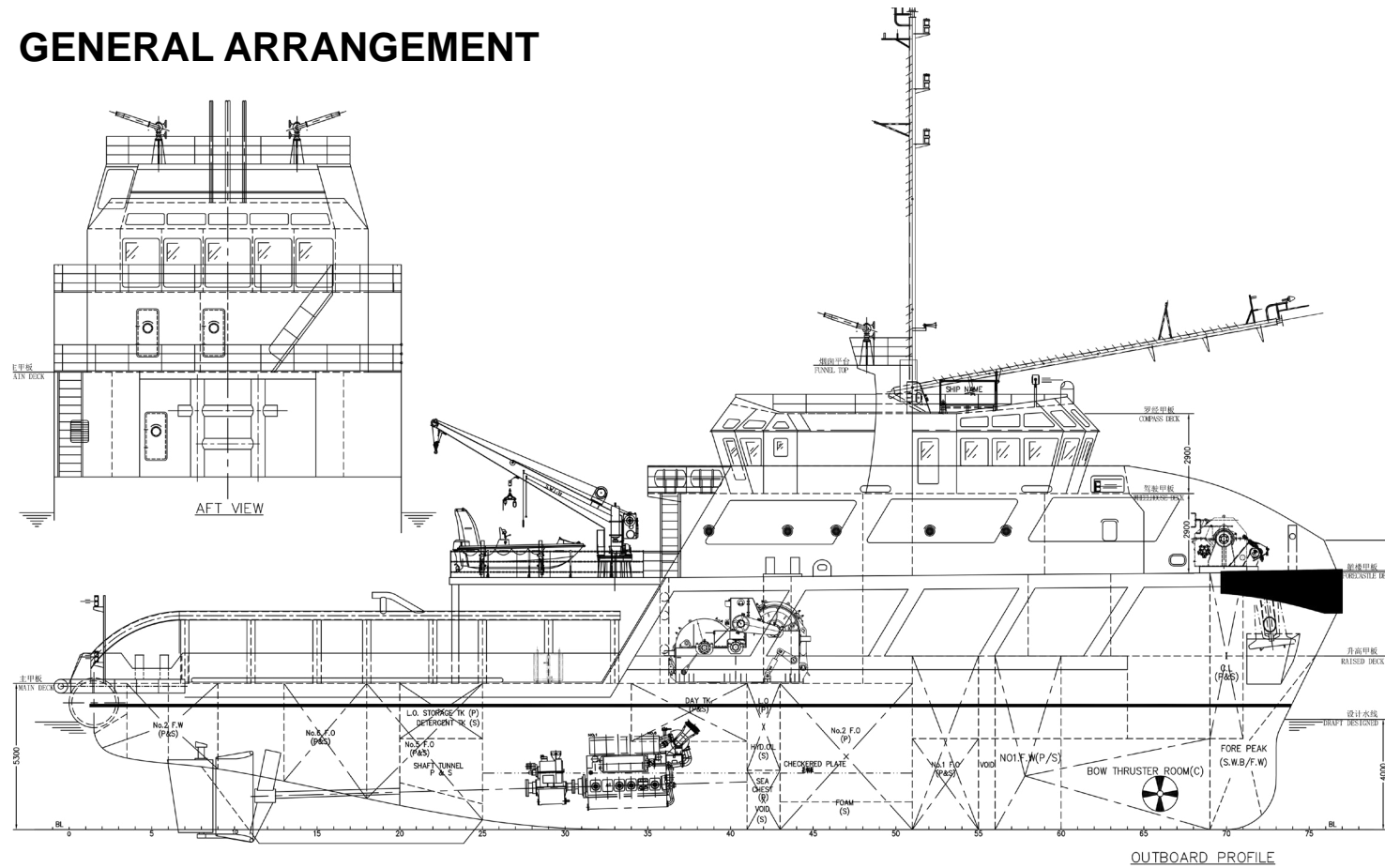
TOWING & ANCHOR HANDLING EQUIPMENT

Tow Winches:	1 x AHTW - 100-100-01
Drive System:	Electro Hydraulic
Drums/Winch:	Double Drum
Drum Capacity:	1000m/50mm
Drum wire length:	1000m (Towing wire)
Winch Heave:	100T
Recovery Speed:	80T/5 Meter Per Min
Brake Hold:	150T Static
Spooling System:	Worm Gear
Spooling Adjustment:	Remtote Controlled (Auto)
Towing Wire Diameter:	50mm
Towing Wire Length:	1000m
Karm Fork:	400 Tons
Towing Pins:	160 Tons

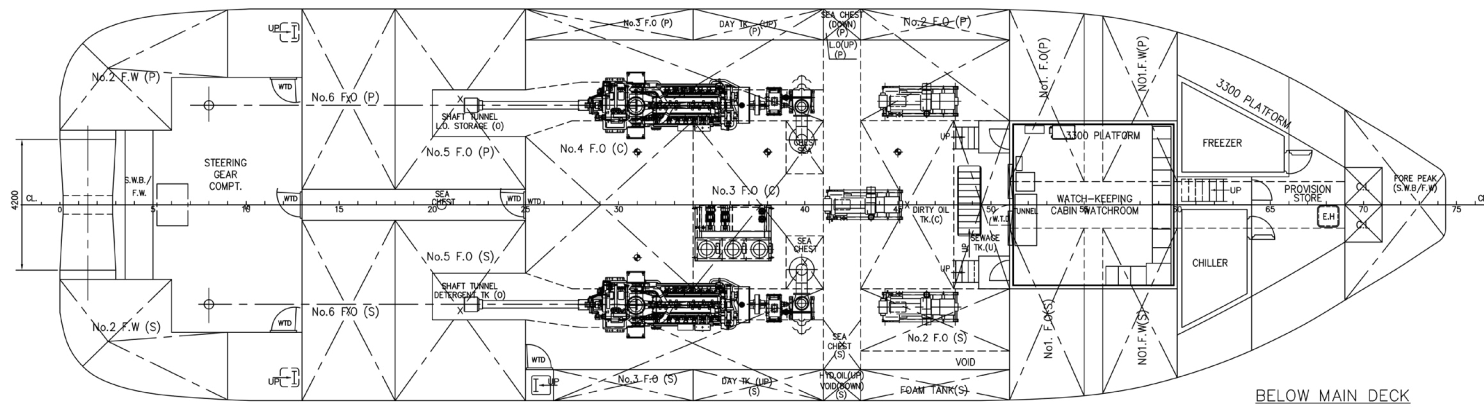
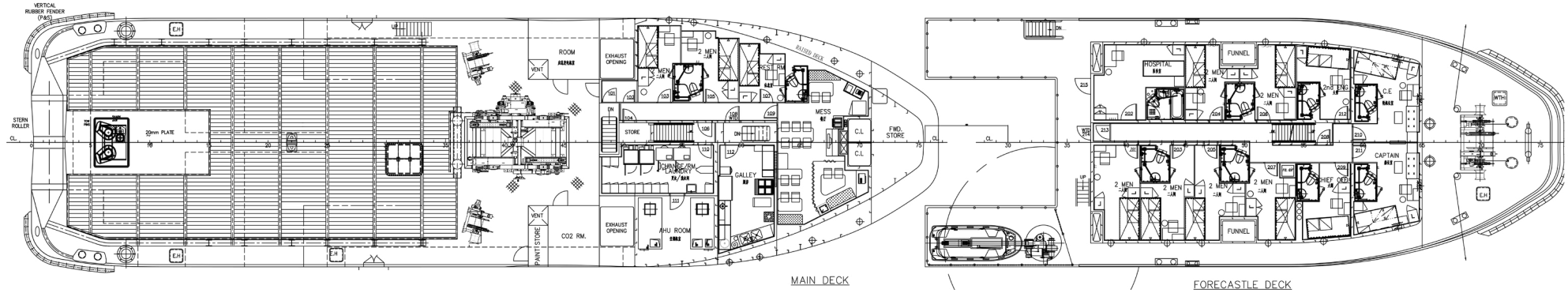
FI-FI CAPABILITIES

Fire Monitors:	2 units FFS Water Monitor (Capacity: water/foam: 1200/300m ³ /h)
Fire Extinguisher:	1 Shipset FE per designer drawing
Detection System:	1 Shipset Tetra fire detection alarm system
CO2 System:	1 Shipset TYCO CO2 System
Dispersant System:	2 Center Throw Nozzel

GENERAL ARRANGEMENT



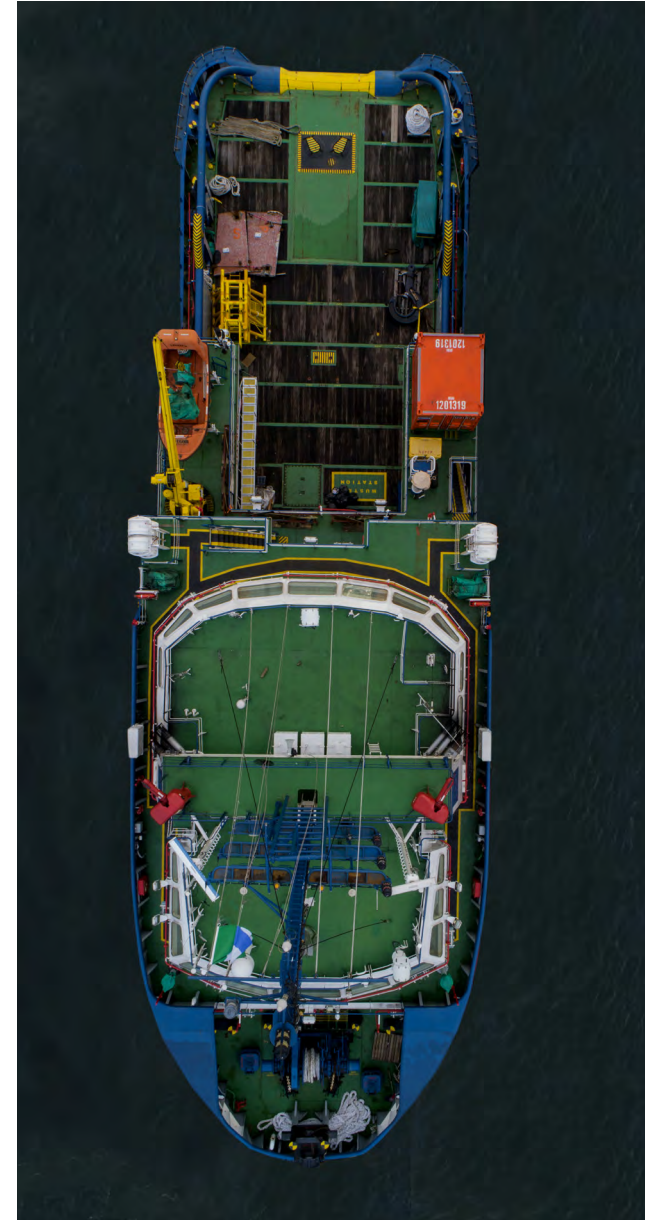
GENERAL ARRANGEMENT



PRINCIPAL PARTICULARS

LENGTH O.A	_____	46.00m
LENGTH W.L	_____	44.10m
BEAM MLD.	_____	12.60m
DEPTH MLD.	_____	5.30m
DRAFT DESIGNED/MAX.	_____	4.00m/4.5m
COMPLEMENT	_____	20 MEN

PHOTO GALLERY





**2 FFS Water Monitors
1200/300 m³/h**

20 PAX Accommodation

50mm Towing Wire Diameter

1000m/50mm Drum Capacity

1000m Drum Wire Length

1 x AHTW - 100-100-01 Tow Winch



ariosh

Contact:

+234.803.900.5000 | +234.1.277.3955
+234.803.900.5011 | +234.803.900.5015
+234.803.395.0788 | +234.803.237.4836

info@ariosh | bd@ariosh.com | marine@ariosh.com | www.ariosh.com | chartering@ariosh.com