

# ariosh

VESSEL BROCHURE



OSHE HONMI



# Overview

The Oshe Honmi Main installation Vessel has a 402-man accommodation capacity and is equipped with pipelay capabilities for offshore construction works.

The MIV has a 300-ton pedestal crane, more than 1500 square meters of clear deck space and fitted with a 10-point mooring system.

Class: BV I +HULL +MACH, Offshore Service Barge  
-Lifting / Accommodation, Pipelay Unrestricted  
Navigation, Alm

Name:	Oshe Honmi
Owner:	Ariosh Ltd
Vessel Type:	Main Installation Vessel
Flag:	Panama
Port of Registry:	Lagos
Built:	2015
Builder:	Poet Shipbuilding & Engineering PTE LTD
IMO No:	8799645
Call Sign:	3FKZ4

# Specification

## DIMENSIONS

Length Overall:	120.168m
Breadth (Moulded):	31.7m
Depth (Moulded):	9.0m
Draft Range:	3.5 - 6.0m
Deck Space:	1500.0 sq.m

## MACHINERY

Main Generator:	8 x 940ekW (449V/3ph/60Hz)
Emergency Gen:	1 x 500eKW
Fuel Management:	FuelTrax EFMS Fitted with Fuel Bunker Line
Security:	CCTV with 360 Degrees Nigt Vision
Communication:	Two (2) KVH TracePhone V7HTS VSAT LARS Thrane Iridium base Satellite Communication system

## TONNAGE

Gross Tonnage:	18,339T
NRT:	5,501T

## HELIDECK

CAP 437 Compliant Helideck, S92 and S61N Helicopter Types, 12.8T "T" Value, 22 Mtr "D" Value.

## ACCOMMODATION

Single Cabins:	6 (2 available for client)
Double Cabins:	30
4-man Cabins:	84
General Mess:	270 Person seating
Officers Mess:	40 person seating
Recreations rooms:	2 recreation rooms fitted with TV and set top box and one Table Tennis board
Offices:	4 Offices fitted with chairs, tables, LAN connection, phone connection, filing cabinet and white board etc.
Madical Facilities:	Hospital equipped with 5 bed spaces, Oxygen cylinders, stretchers and other medical equipment, 1 first aid room.

## WORK BOAT/RESCUE CRAFT

Number:	1 X 6 Persons
Manufacturers:	Vanguard
Age:	4 Years

## ENGINES

Eight (8) Caterpillar main engines / generators, 994 KW 1800 rpm total rated propultion capacity (KW), Diesel Electric main propulsion system type

## MOORING/DECK EQUIPMENT

Main Crane:	300 T SWL Pedestal Crane
Service Cranes:	2 x 15 T SWL (4-12M)
Mooring System:	10 Point Mooring
Mooring Wire Length:	1500.0m
Anchors:	12 Ton Delta Flipper Anchors
Permanent Buoy:	10 Steel Fabricated Buoys
Pendant Lines:	10 x 100m x 52mm Diameter
Extension Wire for Winch:	8 x 500m x 52mm Diameter
Anchor Winch Wire:	8 x 1500m x 52mm Diameter
Anchor Winch Wire:	2 x 1300m x 64mm Diameter
Mooring Winches:	130 T Pull at first layer x 13m/min
Surfer Landing:	1 each on Port & Starboard Side

## COMMUNICATION EQUIPMENT

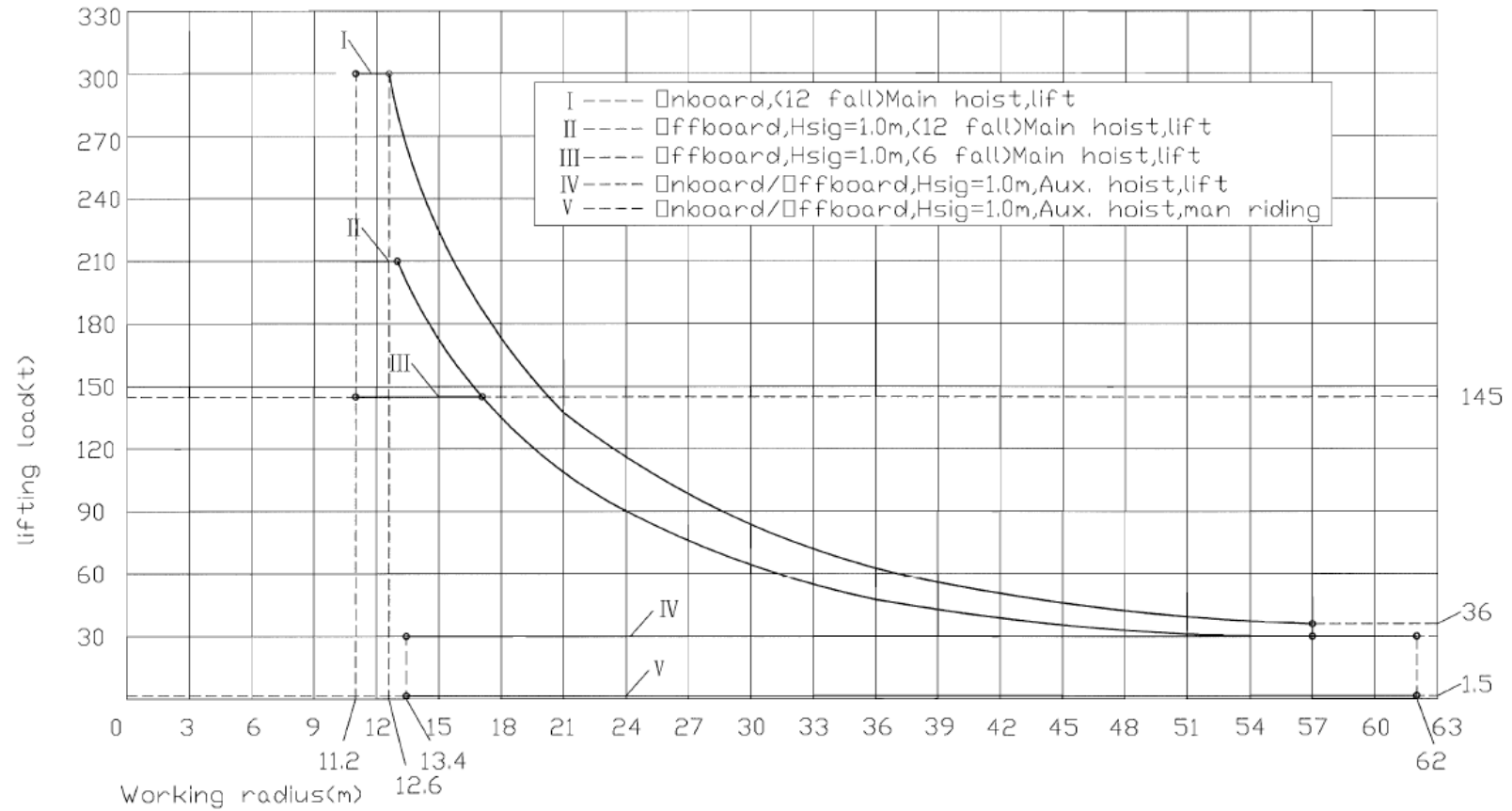
GMDSS equipment manufacturer:	FELCOM-18, Furuno RC
GMDSS sea area:	A3
VSAT Communication:	V7 HTS, TRACPHONE

## Deck Space

1500 square meter total deck space free area, 600 square Mtr + 150 square Mtr sheltered deck space free area, 15T per square meter minimum deck strength, 3 x Yokohama pneumatic fenders fenders

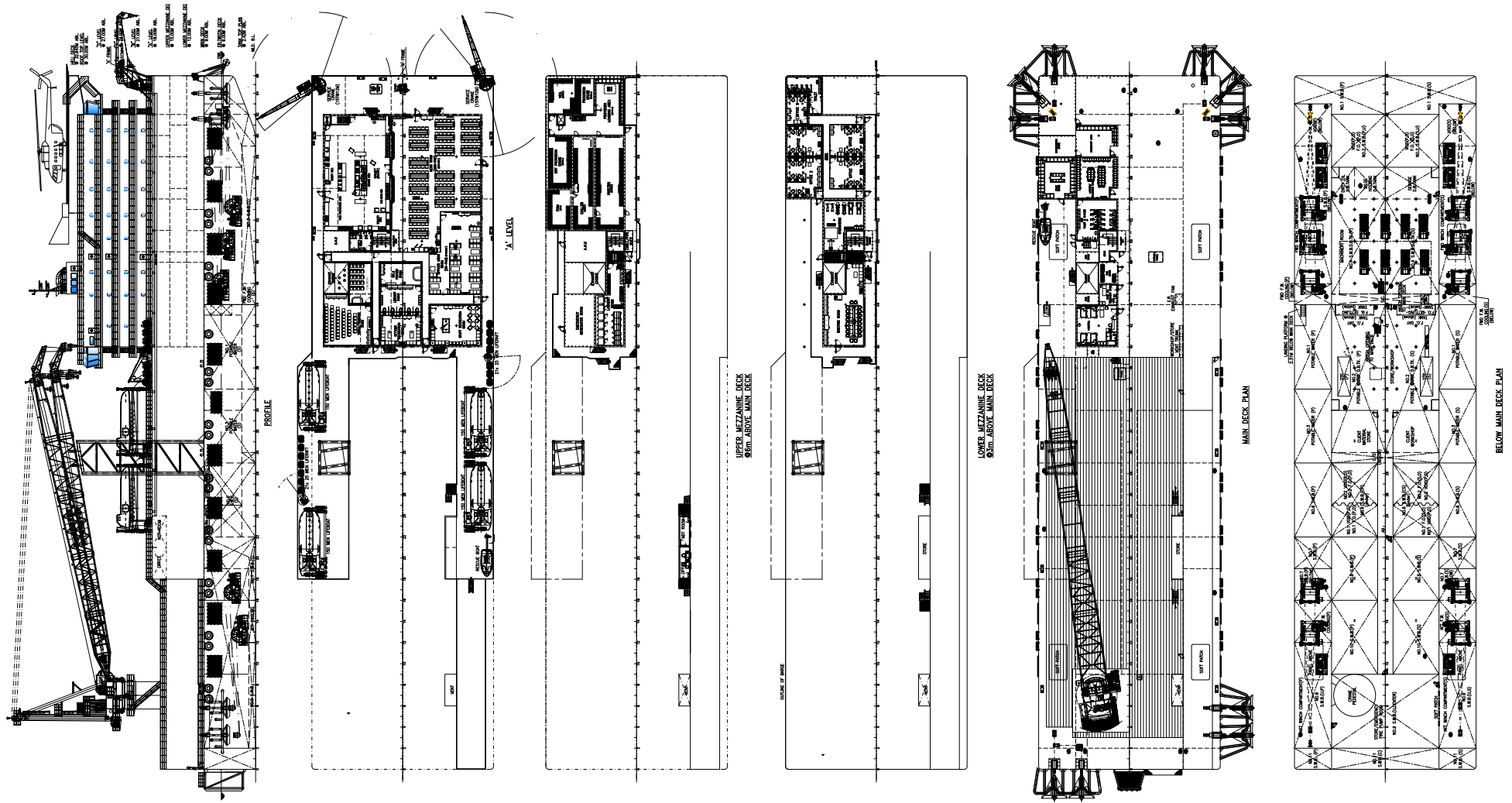
# CRANE CHART

Load Curve



Old Cad File					Contract:	Customer: ##	Project:	Model:
Cad File	<b>AS-BUILT DRAWING</b>				 SCM	Cad File: 2421HX22-00	Drg. NO.: 2421HX22-00	
							YQHG4670-300t-12.6m(30t-62m) Offshore Pedestal Crane	
Sign	Date				Designed by	Verified by	SHEET NO: 2 OF 3 SHEETS SCM, CHINA	
Index	Date	Sign	Description of Change	Reason of Change	Standardized	Confirmed by	Material: General Arrangement	

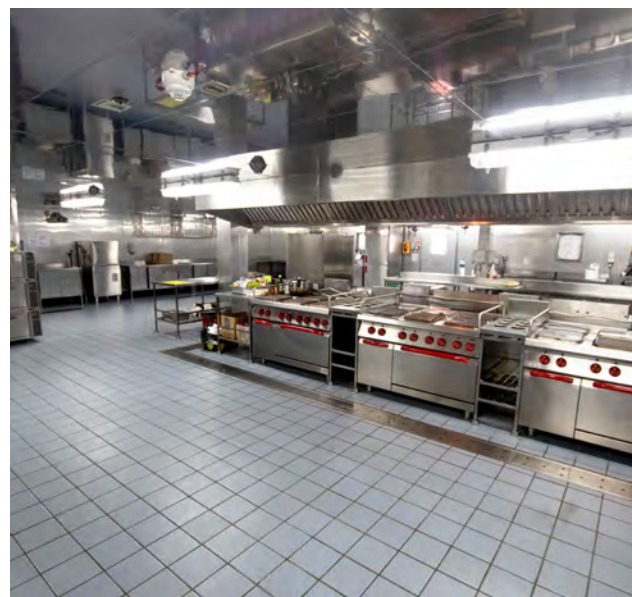
# GENERAL ARRANGEMENT



# PHOTO GALLERY



# PHOTO GALLERY



The Ariosh logo features the word "ariosh" in a white, lowercase, sans-serif font. A small red dot is positioned above the letter 'i'. The background of the entire page is a dark blue, semi-transparent overlay of a large industrial vessel, likely an offshore supply ship, with visible deck structures, railings, and a yellow cylindrical tank. The name "OSHE HONMI" is faintly visible on the side of the vessel.

# ariosh

## Contact:

+234.803.900.5000 | +234.1.277.3955  
+234.803.900.5011 | +234.803.900.5015  
+234.803.395.0788 | +234.803.237.4836

[info@ariosh](mailto:info@ariosh) | [bd@ariosh.com](mailto:bd@ariosh.com) | [marine@ariosh.com](mailto:marine@ariosh.com) | [www.ariosh.com](http://www.ariosh.com) | [chartering@ariosh.com](mailto:chartering@ariosh.com)