

ariosh

VESSEL BROCHURE



OSHE REWO



Overview

The Oshe Rewo Anchor Handling Tug Supply (AHTS) Vessel is designed for Towing, Anchor handling as well as to carry out regular supply and support duties for offshore construction works.

The vessel is optimized for low fuel consumption through Hybrid diesel, electric and mechanical arrangement. It is well equipped, focusing on HSE and maximum safe protection for cargo and crew.

Class: +A1,SSR GRC (19 PERSONS), AH,FFV1, OSR-C1, OSV, SUPPLY, TOW, E, +AMS, +ACCU,+DPS-2

Name:	Oshe Rewo
Owner:	Ariosh Ltd
Vessel Type:	82MT Bollard Pull Hybrid DP2
Flag:	Singapore
Port of Registry:	Singapore
Built:	2016
Keel Laid:	2014
Class Society:	American Bureau of Shipping (ABS)
IMO No:	9747211
Call Sign:	9V2897

Specification

MAIN PARTICULARS

Length Overall:	67.85m
Breadth (Moulded):	16.50m
Depth (Moulded):	6.80m
Operational Draft (Moulded):	4.50m
Max. Draft (Moulded):	5.48m
Gross Tonnage:	2623 T
Deck Cargo / Deck area:	450 sq.m
Deck Strength:	7 T/m ²
Accommodation:	48 Persons

MACHINERY

Main Engines:	2 x 1471kW Niigata
Main Generator:	4x994kw Caterpillar C32
Emergency Generator:	Volvo Penta D9 MG, 230 kW
Bow Thrusters:	2 x 825kW 12.2T CPP Tunnel
Stern Thrusters:	2x2206 kw Azimuth Niigata Z-Peller
Propellers:	Niigata ZP 41 CP
Gear Ratio:	HITACHI CLUTH
Steering Gear Motors:	4
Emergency Steering:	YES
Fuel Management:	Fuel Trax EFMS
Security:	CCTV with 360 Degrees Night Vision

ACCOMMODATION

1-man cabin:	6
2-Man cabins:	5
4-man Cabins:	8
Total:	48 men
Hospital:	1
Galley:	1

OPERATIONAL PERFORMANCE

Bollard Pull:	82.16 MT
Min.Fuel Consumption:	50% LOAD - 12.8m ³ Per Day
Max.Fuel Consumption:	100% LOAD - 21.6m ³ Per Day
Max.POB:	48, 60.0m ³ Min Operational fuel ROB
Fuel Capacity:	331.50m ³ (Bunker) +262.3m ³ (Cargo)

COMMUNICATION EQUIPMENT

GDMSS Equipment:	Furuno
GMDSS sea area:	A1, A2, A3
Radio Sets onboard:	Sailor SP3520
VHF Fixed Radio:	2 x Furuno FM-8900s
PA System:	Vingtor SPA, ETB-10
GPS	GPS Navigator Model GP 150
AIS Systems:	FA- 150 AIS
Navtex Receiver:	JMC- NT800 Receiver

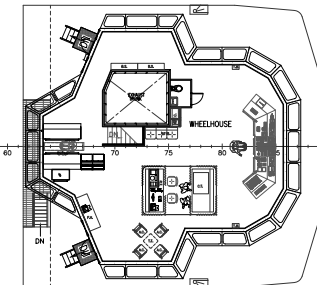
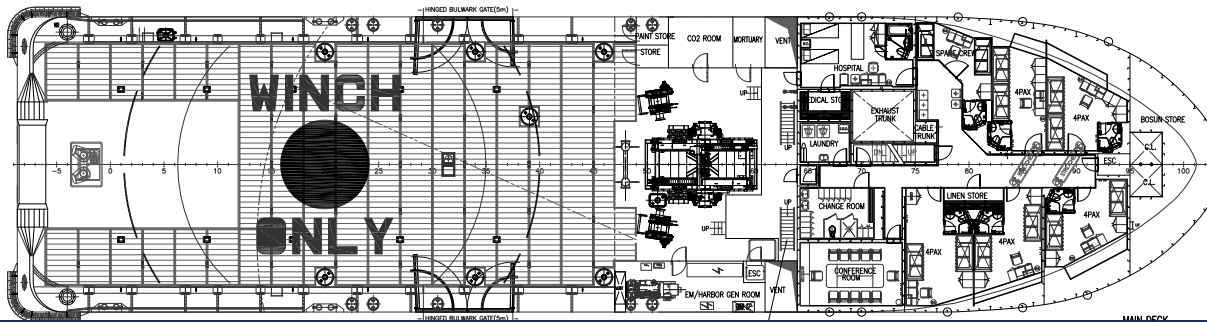
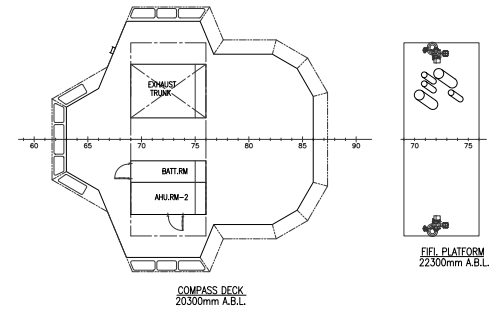
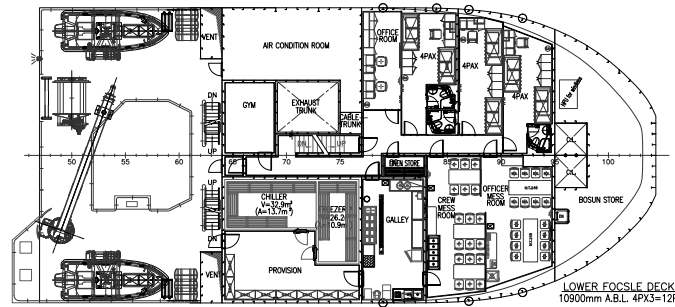
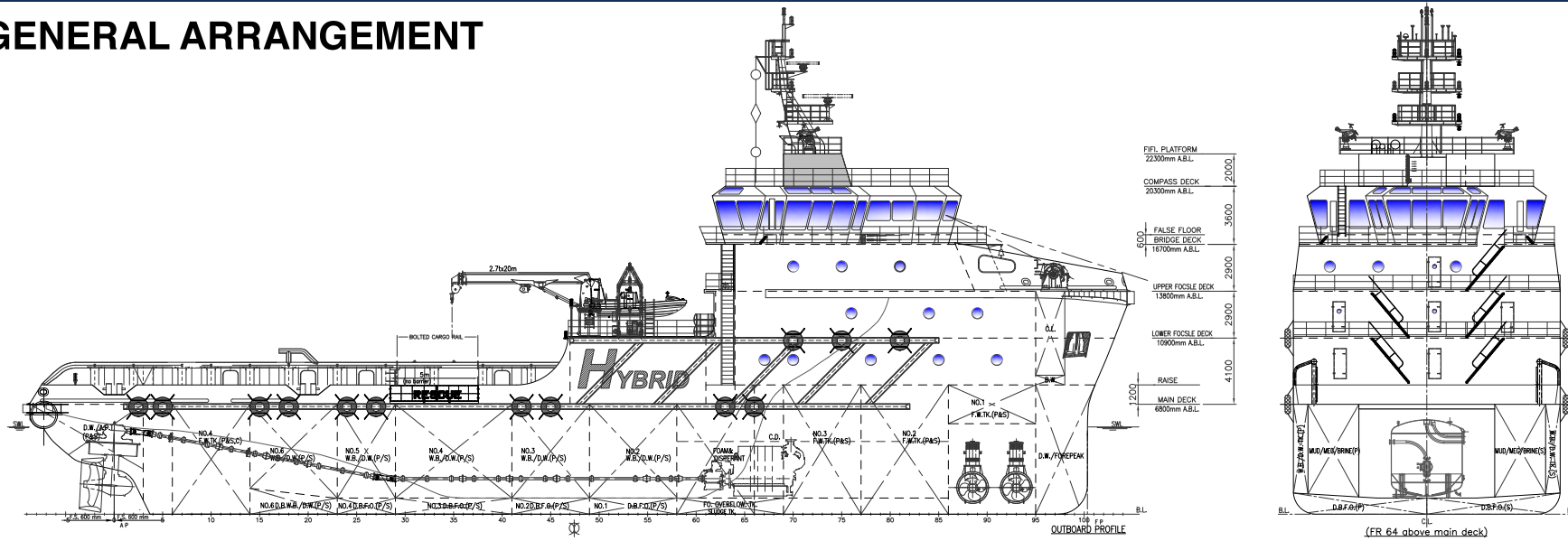
TOWING & ANCHOR HANDLING EQUIPMENT

Tow Winches:	2 x AHTW - 150- 150- 01
Drive System:	Electro Hydraulic
Drums/Winch:	1 + 1 (1 Towing, 1 Anchor Handling)
Drum Capacity:	200m/60mm (Anchor Handling) 1200m/60mm (Towing Winch)
Drum wire length:	1200m/60mm (Towing wire) 300m/46mm (Anchor handling)
Winch Heave:	150T
Recovery Speed:	5M/minute Winch
Brake Hold:	250T Static
Spooling System:	State Type Spooling Gear
Spooling Adjustment:	Remotely Controlled (Auto)
Towing Wire Diameter:	60mm
Towing Wire Length:	1200m
Wirebreaking load:	Min-274T, Actual-279.7T
Karm Fork:	300 Tons
Towing Pins:	160 Tons

FI-FI CAPABILITIES

Fire Monitors:	1 FFS Water Monitor 1200 m ³ /hr FFS Water/Foam Monitors 1200m ³ /hr, 1 FiFi Class
Fire Extinguisher:	1 Shipset FE per ABS Safety Plan
Detection System:	1 Shipset fire detection alarm system

GENERAL ARRANGEMENT



GENERAL ARRANGEMENT

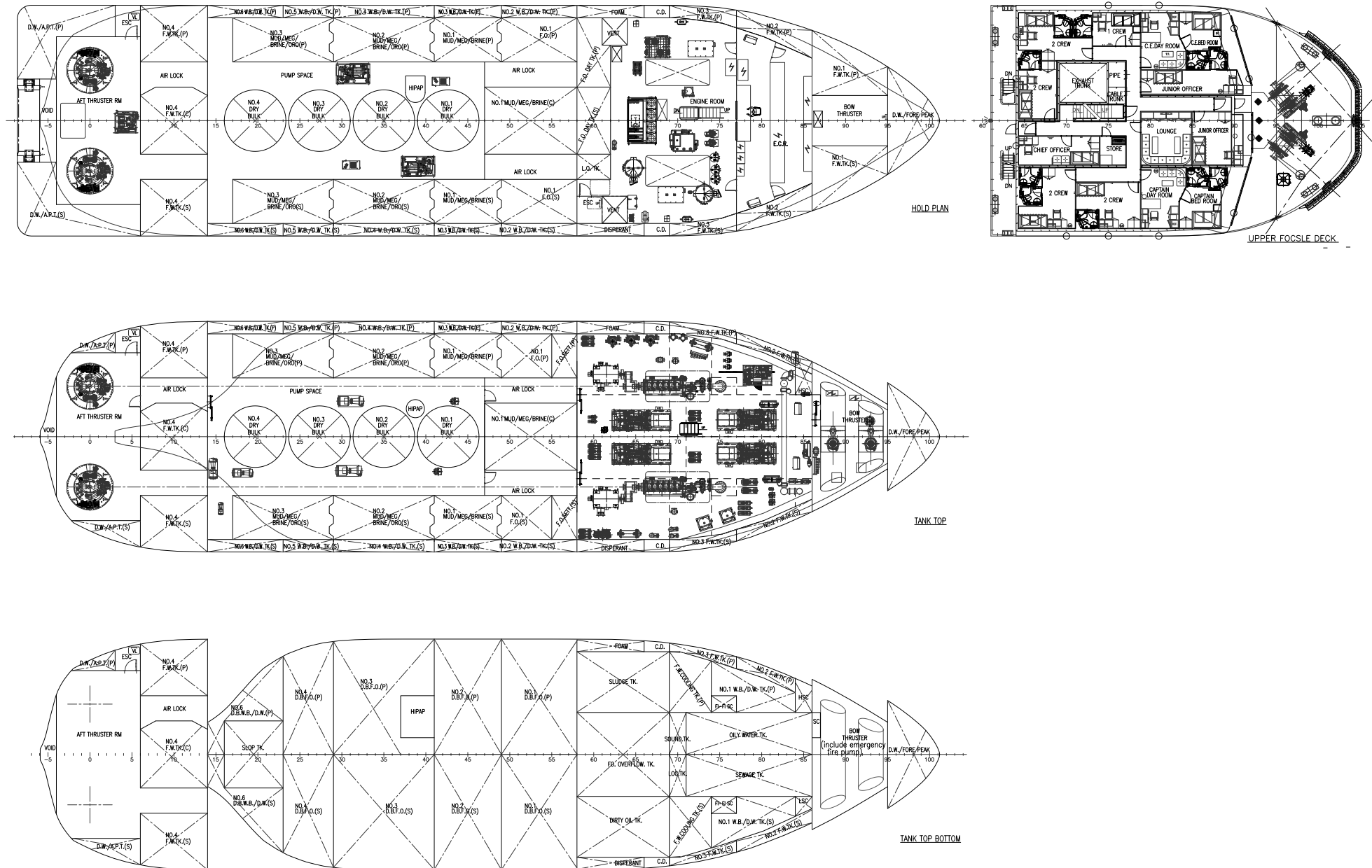
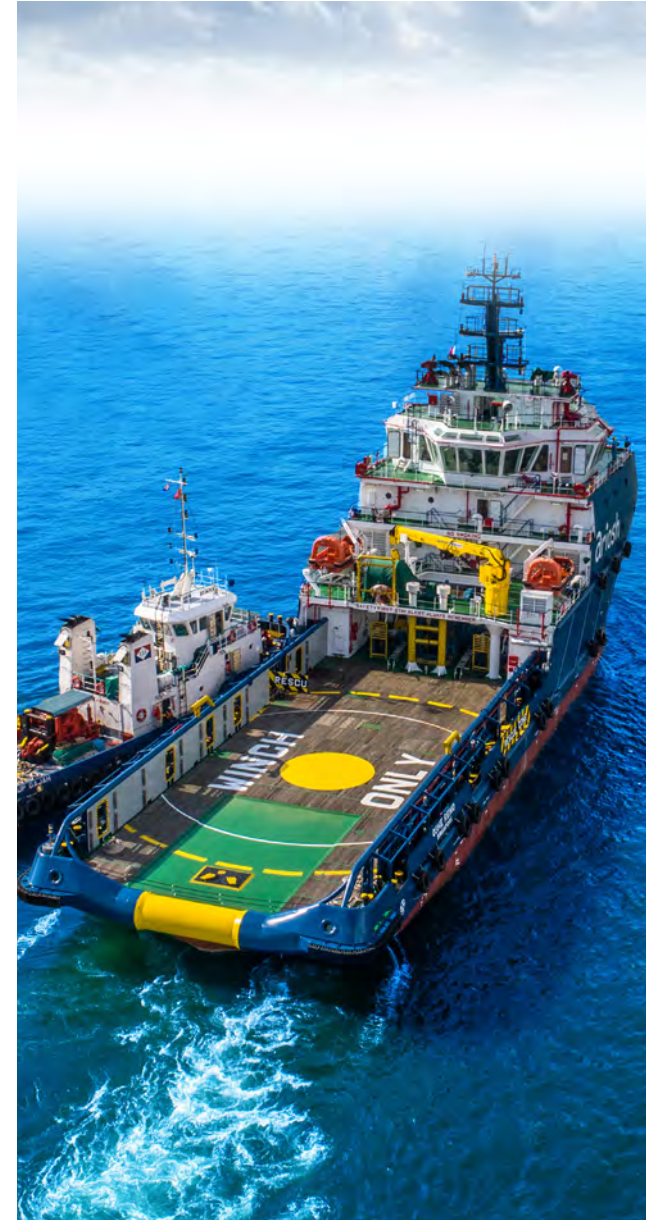
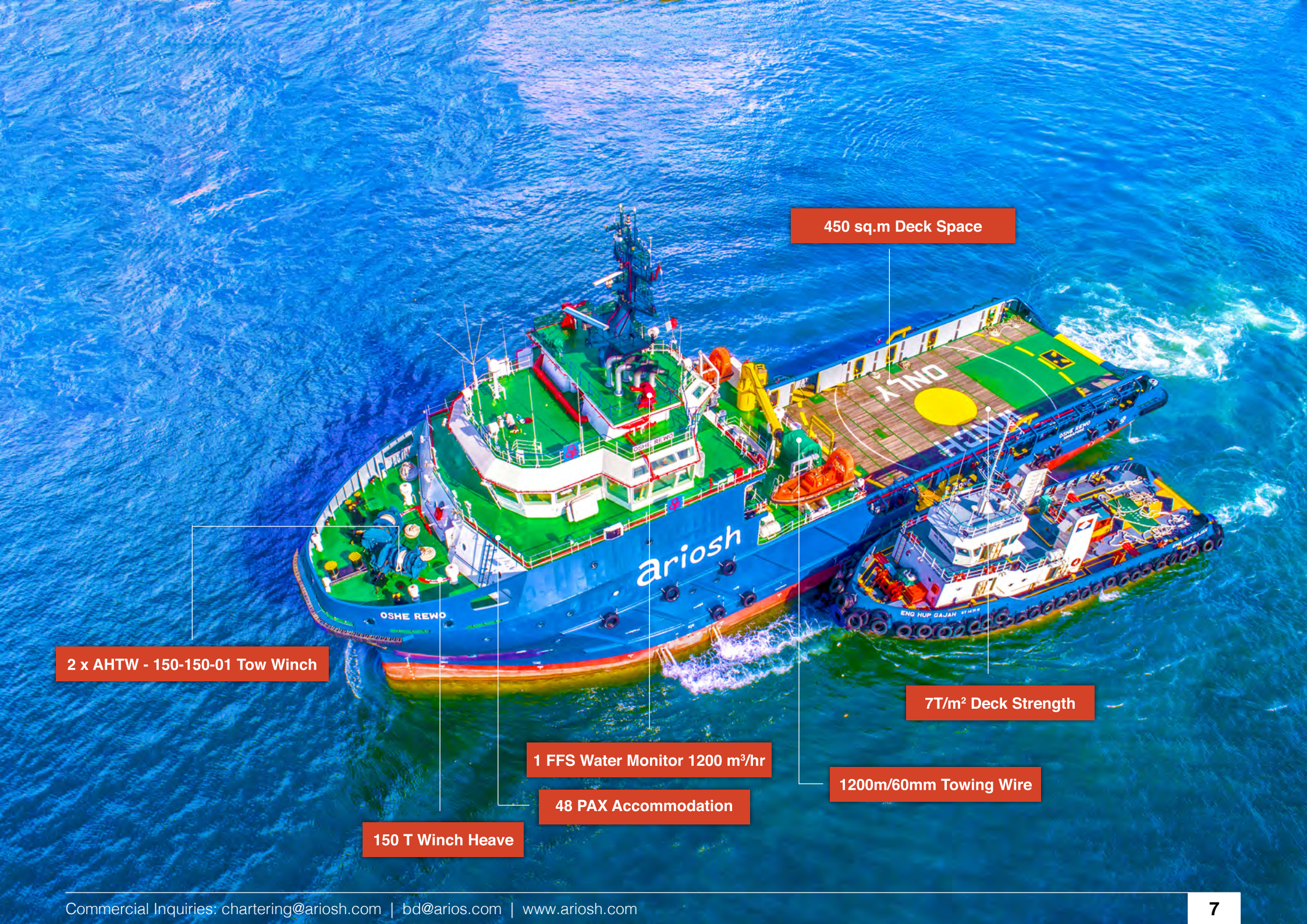


PHOTO GALLERY





450 sq.m Deck Space

2 x AHTW - 150-150-01 Tow Winch

7T/m² Deck Strength

1 FFS Water Monitor 1200 m³/hr

1200m/60mm Towing Wire

48 PAX Accommodation

150 T Winch Heave



ariosh

Contact:

+234.803.900.5000 | +234.1.277.3955
+234.803.900.5011 | +234.803.900.5015
+234.803.395.0788 | +234.803.237.4836

info@ariosh | bd@ariosh.com | marine@ariosh.com | www.ariosh.com | chartering@ariosh.com