



**Anchor Handling Tug Vessel (AHT)**

**Oshe 3 Anchor Handling Tug** is a state-of-the-art vessel built in 2016 and delivered to Ariosh vessel fleet in 2018.

The Oshe 3 is utilized for towing, and carrying out anchor handling duties to support offshore activity:

- 20 Pax Accommodation
- 163 sq.m Deck Space
- 50mm Towing Wire Diameter
- 5Tm<sup>2</sup> Deck Strength
- DP1 Anchor Handling Tug (72.2 ton Bollard Pull) Vessel (AHT)



## ARIOSH OSHE 3 AHT

### VESSEL MAIN PARTICULARS

Vessel Name	Oshe 3
Manager	Ariosh Ltd.
Owner	Ariosh Ltd.
Vessel design	Poet Shipbuilding & Engineering
Type	Anchor Handling Tug (AHT)
Class definition	ABS Class + A1 Towing Vessel + AMS+ AH + FiFi-1, DPS-1
Vessel built	2016
Yard no	HQ107
Port of registry	Lagos
Flag State	Nigeria
IMO Number	9707326
Call sign	50KD

### ACCOMMODATION

Total number of bunks	20 Persons
1 man cabins	4 Cabins
2 man cabins	4 Cabins
4 man cabins	2 Cabins
Hospital room	1
Galley	1

### GENERATORS

Bow thrusters	1x CPP Bow Thruster (approx. 45KN)
Aux generators Make	Cummins
Aux generators capacity	3 x 300KWe ISSMXTA 11
EM generator make	Cummins
EM generator capacity	1 x CSMXT5.9, 112KWe

### PRINCIPAL DIMENSIONS

LOA	46m
LPP	39.54m
Breadth mld	12.6m
Depth mld to main deck	5.3m
Min draft	4.3m
Summer draft	4.5m
Air draft	19.0m
Deadweight	509T
Lightship	563 T
Gross tonnage	1072 T
Net tonnage	321 T

### PROPULSION

Total output	2 x 1920 kw Geared Drive
Main engines	2 Units Caterpillar Marine Propulsion Engine 35Kc (Capacity :2,575BHP)
Propeller	2 x 1920 kw Geared Drive
Drive type shaft/diesel-electric	Shaft Diesel
Fuel type MGO/HFO	MGO

### THRUSTERS

Bow thruster	1 Unit Ocean Marine Industry CPP (Capacity 45KN)
Stern thrusters	2 x 2206 kw Azimuth Nigata Z-Peller

## ARIOSH OSHE 3 AHT

### PRINCIPAL DIMENSIONS

Service speed	8 Knots with 60% MCR
Full speed	12 Knots with 100% MCR
On DP (under average conditions)	0.3knots
Electrical supply	3 X 300 KW

### CARGO DECK

Deck space	163 sq.m
Usable deck space	186 m <sup>2</sup>
Deck length	18.4 m
Deck strength	5T/m <sup>2</sup>
Deck cargo capacity (tonnes)	2.0 T/m <sup>2</sup>

### AVAILABLE DECK SUPPLY

Air outlet capacity	163 sq.m
For vessels maintenance only	
ROV power outlet capacity	186 m <sup>2</sup>
Reefer outlet capacity	4 x 380-440V I 60 Hz

### CARGO CAPACITY SUMMARY

Fuel oil	569.5m <sup>3</sup>
Fresh Drill water	178.7m <sup>3</sup>
Water Ballast	44.6m <sup>3</sup>
Dirty oil tank	15.2m <sup>3</sup>
Lub. oil tank	3.8m <sup>3</sup>
EFMS (Electronic Fuel Monitoring System-Royston) installed	Yes

### GYPSY

Gypsy starboard side	1
Gypsy port side	1

### DRILL WATER

Tank capacity	178.7m <sup>3</sup>
Water Ballast	44.6m <sup>3</sup>
Number of tanks	2
Pump capacities	1 x 50 m <sup>3</sup> /hr
Pump type screw/centrifugal	Horizontal Centrifugal
Number of pumps	1

### FW

Tank capacity	178.70 m <sup>3</sup>
Number of tanks	4
Pump capacity	1 x 50 m <sup>3</sup> /hr
Pump type screw/centrifugal	Horizontal Centrifugal
Number of pumps	1

### FUEL OIL

Tank capacity	486.92 MT head @100%, vessel has got an overflow system
Number of tanks	14
Pump capacity	1 x 22.06 m <sup>3</sup> /hr
Pump type screw/centrifugal	Horizontal Gear type
Flowmeter	Yes

### ANCHOR HANDLING EQUIPMENT

Sharks jaws	KARM FORK 102mm with SWL 300T
Towing pins	Bollard Pull 160Tons
Stern roller dim	1 Unit as per Designer Drawing Capacity 200T
J-hook	110 T

### DECK CRANE

Provision crane: 1 Unit Jianguyin Beihai Crane Capacity: 4KN Max Hoist 30KN

## ARIOSH OSHE 3 AHT

### TOW/WORK WINCH

Type	ZICOM DCK001276AHTW-100-100-01
Inner drum diameter	800 mm
Diameter of flanges	1900 mm
Low gear: Drive hoist first layer	1st speed range 80t x 0-5m/min
Low gear: Drive hoist top layer	2nd speed range 16t x 0-24 m/min
Low gear: Lowering first layer	1st speed range 80t x 0-5m/min
Low gear: Lowering top layer	2nd speed range 16t x 0-24 m/min
Low gear: Dynamic barking first layer	150 T
Low gear: Dynamic barking top layer	150 T
Brale holding first layer	150 T

### TUGGER / CAPSTAN

Tugger winch type	2 Unit Zicom HTUG-10-L-01/ HTUG-10-12-01
Tugger winch capacity	3 T
Tugger winch hoisting speed	15m/mm
Capstan type	2 Unit Zicom HTAG-3-01-01 Hydraulic
Capstan capacity	Capacity 10T/0-15m/mm

### WINDLASS

Type	1 Unit Zicom AHTW-28-28-U3-5-01
Anchor type	ZICOM Model ZIP 1262
Chain length	50mm Dia P.P
Mooring drum capacity	3.8T/0-12m/mm @ Normal Duty

### CARGO LOAD/DISCHARGING CONNECTIONS TYPE/DIM

Fuel oil	1 x 22.06m <sup>3</sup> /hr
Fresh water	1 x 50m <sup>3</sup> /hr
Liquid mud	N/A
Drill water	1 x 50m <sup>3</sup> /hr
Dirty oil pump	1 x 9.34m <sup>3</sup> /hr
Bilge/Ballast	1 x 50m <sup>3</sup> /hr

### DYNAMIC POSITION SYSTEM

Class definition	DP1
Type	Kongsberg Maritime AS
DGPS	2 Units Kongsberg

### TUGGER / CAPSTAN

Tugger winch type	2 Unit Zicom HTUG-10-L-01/ HTUG-10-12-01
Tugger winch capacity	3 T
Tugger winch hoisting speed	15m/mm
Capstan type	2 Unit Zicom HTAG-3-01-01 Hydraulic
Capstan capacity	Capacity 10T/0-15m/mm

### JOYSTICK

Type	c-Joy
Connections points	Plug Type

### WIRE STATUS

AH drum	200 m x 52 mm
Tow drum	1000 m x52 mm
Storage drum Spare tow wire	N/A

## ARIOSH OSHE 3 AHT

### COMMUNICATION EQUIPMENT

MF/HF	Yes
Spare Gypsy's	N/A
MF/HF DSC	Yes
Navtex	1 Unit Furuno NX 700B
EPIRB	1 Unit McMurdo ES Satellite
SART	2 Units McMurdo S4 SART
Inmarsat C	Satellite Communication: 1 Set  Satellite Data Transmission: 1 Set x Inmarsat System
Portable VHF	2 x Furuno FM-8900S
Portable UHF	2 x Motorola
Weather fax	Yes

### GALLEY

Freezer space (m <sup>3</sup> )	1 Set Unit Cooler Model F30HC511E6 with capacity of room (w) 1630
Cooler space (m <sup>3</sup> )	1 Set Unit Cooler Model F30HC511N6 with capacity of room (w) 2180

### STANDBY/RESCUE

Searchlights	2 Units (Monkey Island FWD & AFT)
Line throwing device	4 Units

### LIFE SAVING EQUIPMENT

MOB boat	1 Unit Jiangyin Beihai Lsa (Capacity: 6 Persons) With Inboard Engine
Number and size Liferrafts	6X CRVF-Z-26
Number of Lifejackets	36 Pcs
Number of Survival suits	3 Pcs

### FIFI / DISPERSANT SYSTEM

Type	Fire Monitors: 2 units FFS Water Monitor (Capacity: water/foam: 1200/300m <sup>3</sup> /h)  Fire Extinguisher: 1 Shipset FE per designer drawing  Detection System: 1 Shipset Tetra fire detection alarm system  CO2 System: 1 Shipset TYCO CO2 System
Fire Fighting class	FFS
Fire pumps capacity	1x 50m <sup>3</sup> /hr
Fire monitor capacity	Water / Foam 1200/300m <sup>3</sup> /hr
Disperant system	2 Center Throw Nozzle
Dispersant booms length	2 booms with 5 spray nozzle each, with length 6 Meter each side
Disperant capacity tank & litre/min	9m <sup>3</sup> (Setting 3-6% F/ Capacity 40 M <sup>3</sup> /Hr – 5 Bar)

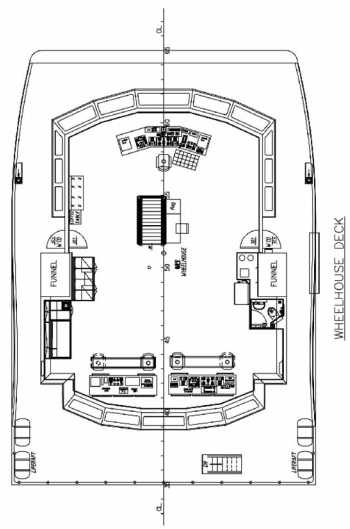
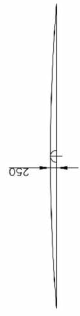
### NAVIGATION EQUIPMENT

X-band Radar	(ARPA) Furuno FAR-21179
S ban Radar	(ARPA) Furuno 1945
Autopilot	Yes
GPS	1 Unit Furuno GP150 GPS
Echosounder	Furuno FE-700
Std Compass	Yes (Lilley & Gillie)
Gyro compass	1 Unit Raytheon Anschuetz STD-22
Log	Yes
Wind gauge	2 Nos. (Raymarine)
AIS	1 Unit Furuno FA-150

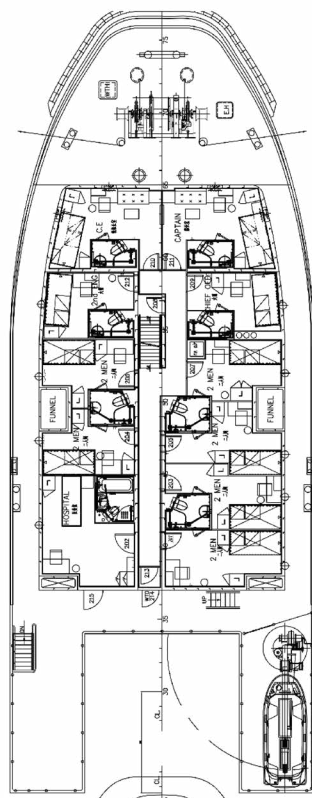
### CONTACT

V-sat ship phone bridge	+1 (505) 431-2894
Fleet Broadband	Yes
Email address	oshe3@ariosh.com marine@ariosh.com

COMPASS DECK COMBER



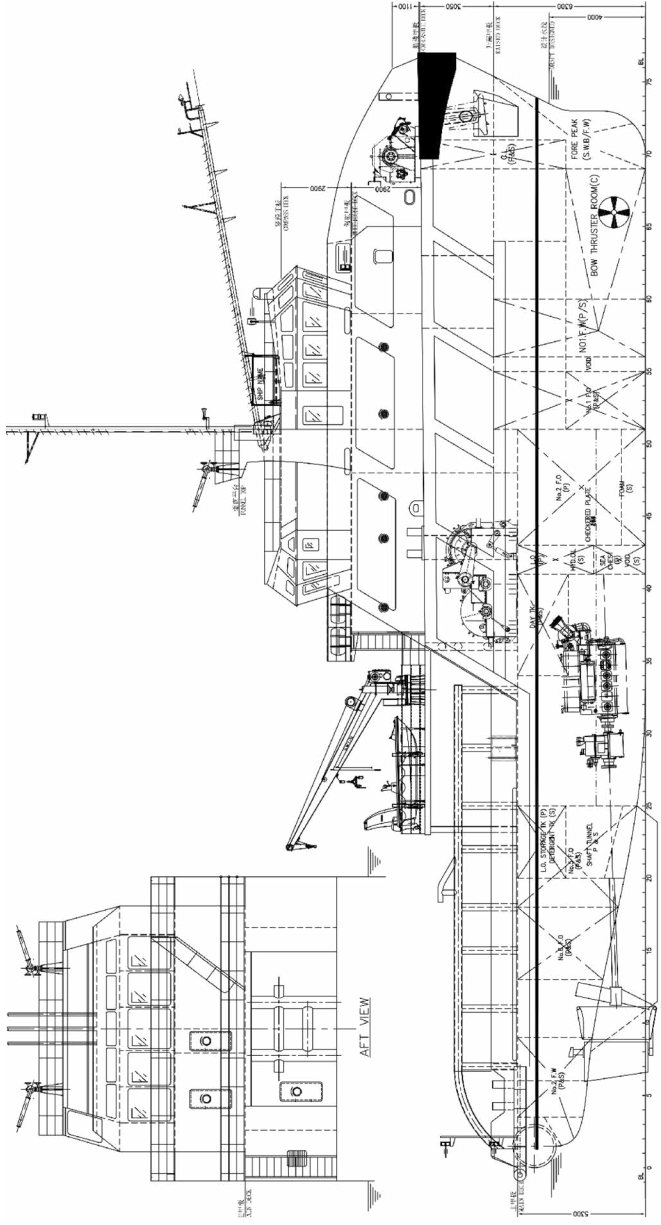
WHEELHOUSE DECK



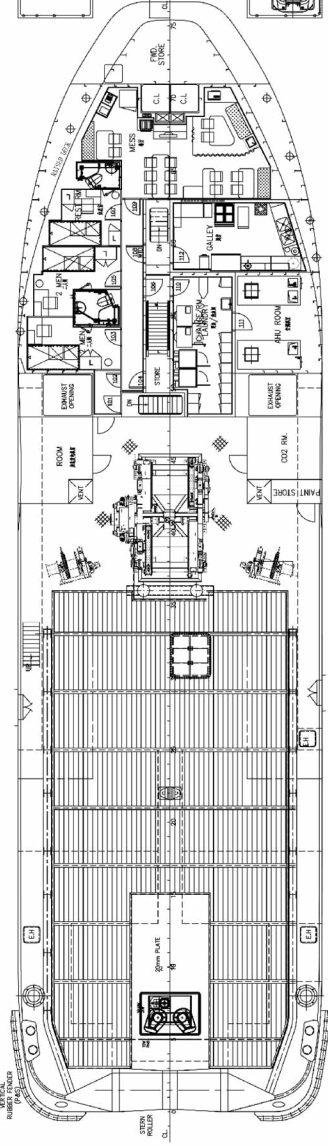
EDRECASTLE DECK

PRINCIPAL PARTICULARS

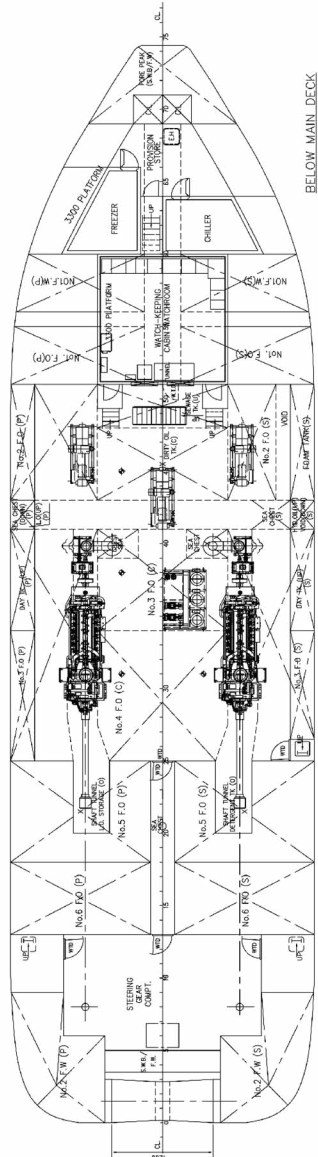
LENGTH O.A.	46.00m
LENGTH W.L.	44.10m
BEAM M.L.D.	12.60m
DEPTH M.L.D.	5.30m
DRAFT DESIGNED/MAX.	4.00m/4.5m
COMPLEMENT	20 MEN



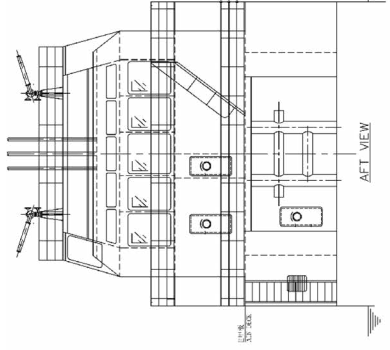
OUTBOARD PROFILE



MAIN DECK



BELOW MAIN DECK



AFT VIEW

# ariosh

+234.803.900.5000 | +234 803 395 0788

+234 817 050 2614 | +234 803 237 4836

[www.ariosh.com](http://www.ariosh.com) | [bd@ariosh.com](mailto:bd@ariosh.com) | [info@ariosh.com](mailto:info@ariosh.com)