



Anchor Handling Tug Supply (AHTS)

Oshe Rewo Anchor Handling Tug Supply is a state-of-the-art vessel built in 2016 and delivered to Ariosh vessel fleet in 2018.

The Oshe Rewo is utilized for towing, anchor handling, and carrying out supply duties to support offshore activity:

- 48 Pax Accommodation
- 405 sq.m Deck Space
- 150 T Winch Heave
- 7Tm² Deck Strength
- DP2 Anchor Handling Tug Supply (82.2-ton Bollard Pull) Vessel (AHTS)

ARIOSH OSHE REWO AHTS

VESSEL MAIN PARTICULARS

Vessel Name	Oshe Rewo
Manager	Ariosh Ltd.
Owner	Ariosh Ltd.
Vessel design	Poet Shipbuilding & Engineering
Type	Anchor Handling Tug Supply Vessel (AHTS)
Class definition	+A1,SSR GRC (19 PERSONS), AH,FFV1, OSR-C1, OSV, SUPPLY, TOW, E, +AMS, +ACCU,+DPS-2
Vessel built	2016
Port of registry	Singapore
Flag State	Singapore
IMO Number	9747211
Call sign	9V2897

ACCOMMODATION

Total number of bunks	48 Persons
1 man cabins	6 Cabins
2 man cabins	5 Cabins
4 man cabins	8 Cabins
Hospital room	1
Galley	1

GENERATORS

Bow thrusters	2 x 825kW 12.2T CPP Tunnel
Shaft generators make:	HYUNDAI
Shaft generators capacity	HRN3.505-88E 2 x 900Kw (PTI)/980 Kw (PTO) @900 RPM
Aux generators Make	Caterpillar
Aux generators capacity	4 x 994kw Caterpillar C32
EM generator make	VOLVO PENTA
EM generator capacity	D9 MG 1 x 230Kw 440v/3/60 Hz (1 x 308 BHP)

PRINCIPAL DIMENSIONS

LOA	67.85 m
LPP	60.20 m
Breadth mld	16.50 m
Depth mld to main deck	6.80 m
Summer draft	5.40 m
Air draft	37.72 m
Deadweight	2261.8 MT
Gross tonnage	2261.8 MT
Net tonnage	786 T

PROPULSION

Main engines	Niigata Diesel 6L26HLX
Propeller	2 x 1,471 Kw (2 x 1,972,6 BHP) @750 RPM
Drive type shaft/diesel-electric	Shaft Diesel
Fuel type MGO/HFO	MGO

THRUSTERS

Bow thruster	2 x 825kW 12.2T CPP Tunnel
Stern thrusters	2 x 2206 kw Azimuth Nigata Z-Peller

ARIOSH OSHE REWO (AHTS)

PRINCIPAL DIMENSIONS

Service speed	13 knots/ 100% RPM
Full speed	13 knots/ 100% RPM
Electrical supply	220 V

CARGO DECK

Deck space	450 m ²
Usable deck space	L: 31m, W: 13.7m
Deck length	31 m
Deck strength	7 T/M ²
Deck cargo capacity (tonnes)	259.4 T

AVAILABLE DECK SUPPLY

Air outlet capacity	450 sq.m
For vessels maintenance only	
ROV power outlet capacity	440 V
Reefer outlet capacity	220 V & 440V

CARGO CAPACITY SUMMARY

Fuel oil	Yes
Base oil	N/A
Fresh Drill water	Yes
Water Ballast	
Liquid Mud	Yes
Can be used for Brine	
Bulk Cement	Yes
Slop	Yes
EFMS (Electronic Fuel Monitoring System-Royston) installed	Yes

DRILL WATER

Tank capacity	
Water Ballast	501.4 m ³
Number of tanks	17
Pump capacities	100 m ³ /h
Pump type screw/centrifugal	Centrifugal
Number of pumps	1

FW

Tank capacity	508.1
Number of tanks	11
Pump capacity	100 m ³ /h
Pump type screw/centrifugal	Centrifugal
Number of pumps	1

LIQUID MUD

Tank capacity	
About 4230 BBL	100 m ³ /Hr 7.5/15 bar
Number of tanks	7
Pump capacity	100 m/Hr 7.5/15 bar
Pump type screw/centrifugal	Centrifugal
Agitator or circulation	Agitator
Possible to handle two types of mud simultaneously	Yes

FUEL OIL

Tank capacity	500 m ³
Number of tanks	12
Pump capacity	100 m ³ /Hr 90 m head
Pump type screw/centrifugal	Centrifugal
Flowmeter	Yes

ARIOSH OSHE REWO AHTS

DRY BULK

Tank capacity 7981 Cuft	230 m ³
Number of tanks	4
Compressor capacity	40 m ³ /hr
Segregate system	Yes

TUGGER / CAPSTAN

Tugger winch capacity	10T @ 22mm/200m
Tugger winch hoisting speed	1200m/60mm (Towing)
Capstan capacity	2 x 5 T

SLOP TANKS

Tank capacity	21.9
Number of tanks	1
Pump capacity	10 m ³ /h

CARGO LOAD/DISCHARGING CONNECTIONS TYPE/DIM

Fuel oil	100m ³ /Hr 90 m head
Fresh water	100m ³ / Hr @ 90 m head
Liquid mud	100m ³ /Hr 7.5/15 bar
Drill water	100m ³ / Hr @ 90 m head
Bulk	2X20m ³ /min @5.6 bar

DECK CRANE

Provision crane	Palfinger Marine PTM 900S 6.5 SWL 2700KG
-----------------	---

WINDLASS

Type	ZICOM
Anchor type	ZICOM Model ZIP 1262
Chain length	50mm Dia P.P
Mooring drum capacity	2 x 200m of 50mm Dia P.P

DYNAMIC POSITION SYSTEM

Class definition	Class 2
Type	Kongsberg K-Pos DP-21
DGPS	2
Diff correction	2
HPR	Nil
Fanbeam	Radius

ANCHOR HANDLING EQUIPMENT

Sharks jaws	KARM FORK 300T
Towing pins	1
Stern roller dim	1560mm Outer Diameter (SWL:200T)
J-hook	Nil
Graphel	Nil
Swivel numbers of.	Nil
Swivel SWL	Nil

WIRE STATUS

AH drum	1
Tow drum	1
Storage drum	1

ARIOSH OSHE REWO AHTS

COMMUNICATION EQUIPMENT

MF/HF	2
Spare Gypsy's	1
MF/HF DSC	2
Navtex	1
EPIRB	1
SART	2
Inmarsat C	1
Portable VHF	3
Portable UHF	3
Weather fax	1

GALLEY

Freezer space	1
Cooler space	1

LIFE SAVING EQUIPMENT

MOB boat	2X Vanguard Nantong 15persons 6.0x2.30x 0.87
Number and size Liferrafts	6X CRVF-Z-26
Number of Lifejackets	60
Number of Survival suits	Nil

FIFI / DISPERSANT SYSTEM

Fire Fighting class	CLASS 1
Fire pumps capacity	2x1200 m ³ /hr 2x1200 m ³ /Hr
Fire monitor capacity	2x1200 m ³ /hr @18 bar
Disperant system	Veejet Nozzle
Disperant booms length	15 m
Disperant capacity tank & litre/min	28 m ³

STANDBY/RESCUE

Searchlights	4
Line throwing device	4

JOYSTICK

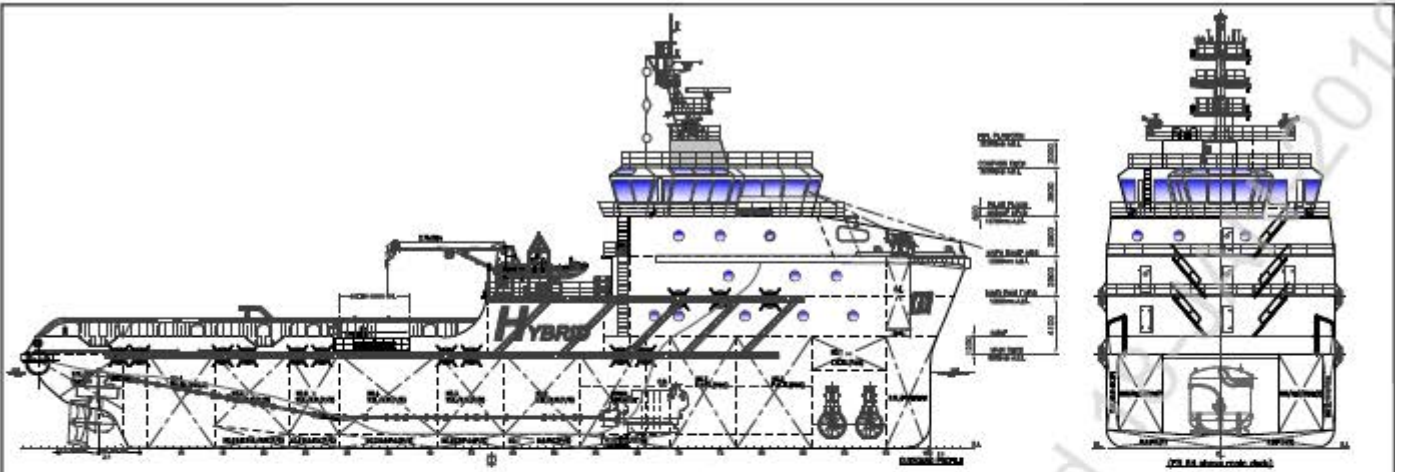
Type	C-Joy
Connections points	3

NAVIGATION EQUIPMENT

X-band Rader	1
S ban Rader	1
Electionic chart system	Nil
Autopilot	1
GPS	1
Echosounder	2
Std Compass	1
Gyro compass	Gyro Compass Type GC 80/85 SIMRAD AP80
Log	2
Wind gauge	3
AIS	Furuno FA150

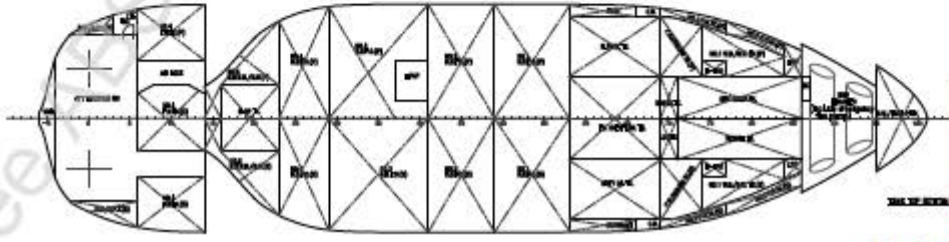
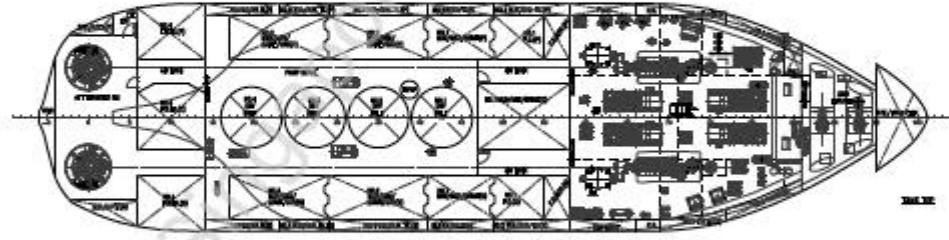
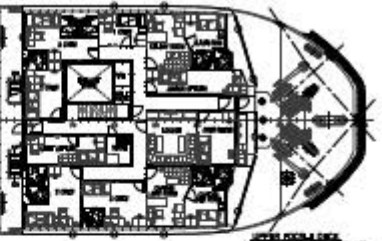
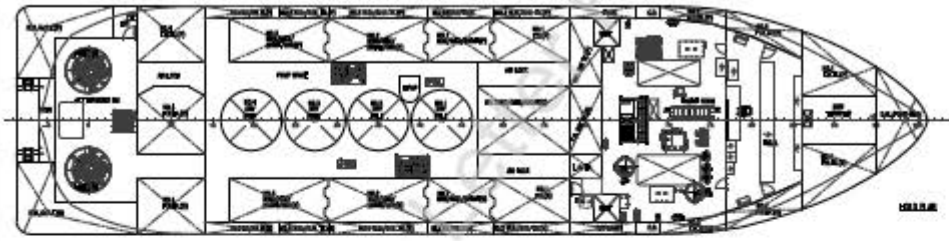
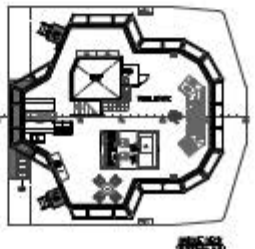
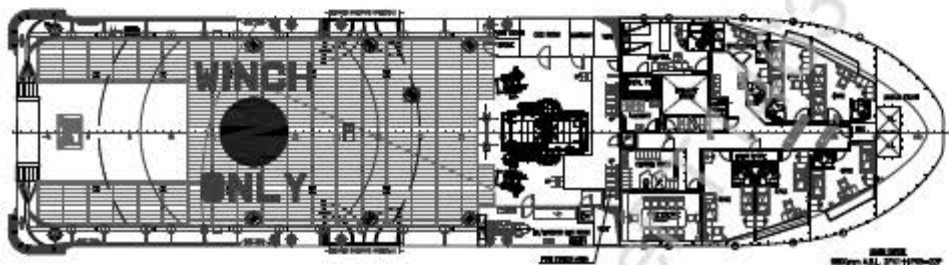
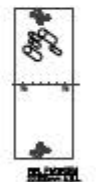
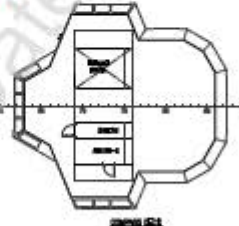
CONTACT

V-sat ship phone bridge	+1 (505) 305-2555
Fleet Broadband	Yes
Email address	osherewo@ariosh.com marine@ariosh.com



※ RECESSED ARRANGEMENT TO BE PROVIDED FOR DOORS OPENING INTO THE PASSAGE

AMENDING BY AMS



PRINCIPAL DIMENSION

LENGTH OVERALL	44.850m
LENGTH BP	36.000m
BREADTH OVERALL	18.000m
DEPTH OVERALL	5.000m
DEPTH FROM BULKHEAD	5.000m
MAX. HEIGHT OVERALL	5.000m
ACCOMMODATION	40 PERSONS
CLASS	ABS/ALU, WinStar, Smart Speed
ABS RULES	ABS-CR-CR-100-1100-100-100
TC	ABS-CR-100-1100-100-100
SEA CODE	-100M Class
SEA AREA CODE	-100M Class
PL/100	-100M Class
BOLLARD PULL	-100 Tons
GALLERY WALK/DECK WALK	300.0 m ² (APPROX)
PERMANENT	200.0 m ² (APPROX)
FUEL OIL	200.0 m ² (APPROX)
WATER	200.0 m ² (APPROX)
CRUDE FUEL OIL	200.0 m ² (APPROX)
WATER/SEWER	200 m ² (APPROX)
WATER/SEWER/RO	200 m ² (APPROX)
RO	200 m ² (APPROX)
WATER/SEWER/RO	200 m ² (APPROX)
DRY BULK	200 m ² (APPROX)
FOAM TANK	20 m ² (APPROX)
RECREATING TANK	20 m ² (APPROX)
DECK WALKWAY (DECK)	2000 m ² (APPROX)
CLEAR DECK SPACE	400 m ² (APPROX)



For Singapore ABS BR
SPL Code
ABS No. M2C 285 (14)

Rag, Republic of Singapore

PORT		GENERAL ARRANGEMENT	
REPUBLIC OF SINGAPORE & SINGAPOREAN VESSEL LTD		GENERAL ARRANGEMENT	
5th FLOOR		GENERAL ARRANGEMENT	
10th FLOOR		GENERAL ARRANGEMENT	
15th FLOOR		GENERAL ARRANGEMENT	
20th FLOOR		GENERAL ARRANGEMENT	
25th FLOOR		GENERAL ARRANGEMENT	
30th FLOOR		GENERAL ARRANGEMENT	
35th FLOOR		GENERAL ARRANGEMENT	
40th FLOOR		GENERAL ARRANGEMENT	
45th FLOOR		GENERAL ARRANGEMENT	
50th FLOOR		GENERAL ARRANGEMENT	
55th FLOOR		GENERAL ARRANGEMENT	
60th FLOOR		GENERAL ARRANGEMENT	
65th FLOOR		GENERAL ARRANGEMENT	
70th FLOOR		GENERAL ARRANGEMENT	
75th FLOOR		GENERAL ARRANGEMENT	
80th FLOOR		GENERAL ARRANGEMENT	
85th FLOOR		GENERAL ARRANGEMENT	
90th FLOOR		GENERAL ARRANGEMENT	
95th FLOOR		GENERAL ARRANGEMENT	
100th FLOOR		GENERAL ARRANGEMENT	

C21350745001

ariosh

+234.803.900.5000 | +234 803 395 0788

+234 817 050 2614 | +234 803 237 4836

www.ariosh.com | bd@ariosh.com | info@ariosh.com