

Anchor Handling Tug Supply (AHTS)

Oshe Rewo AHTS 82T BP DP2



Registration

Type	Anchor Handling Tug Supply (AHTS)
Flag State	Singapore
Class Society	American Bureau of Shipping
Classification	A1,SSR GRC, AH,FFV1, OSR-C1, OSV, SUPPLY, TOW, E, +AMS, +ACCU, +DPS-2, HYBRID

Main Characteristics

Length Overall	67.85 m
Length Between Perpendicular	60.20 m
Breadth Mld	16.5 m
Depth Molded to Main Deck	6.8 m
Gross Tonnage	2261.8 T

Capacities

Deadweight	2261.8 T
Cargo Deck Area	450 m ²
Cargo Deck Dimensions	31 x 13.7 m
Cargo Deck Loading	7T/m ²
Fuel Oil Cargo	500 m ³
Fresh Drill Water	508.1 m ³
Slop Tank	21.9 m ³
Dry Bulk	230 m ³

Dynamic Positioning System

Class Definition	DP2
Type	Kongsberg K-Pos DP-2
DGPS	2 Units Kongsberg

Propulsion

Total Output	2 x 1471 kw
Main Engines	Niigata Diesel 6L26HLX (1471KW)
Shaft Generator	2 x Hyundai HRN3 - 87E (940KW)
Bow Thrusters	2 x Nakashima TCT 165 (825KW)

Performance

Full Speed	13 knots
Economic Speed	5 knots
Fuel Consumption	400 L/h

Deck Equipment

Rescue Boat	2 x Vanguard Natong VG6
Tugger Winch	2 x Zicom, HTug-10-L/R
Deck Cargo Crane	SWL 2700KG
Windlass	1
Shark Jaws	Karm Fork 1560mm with SWL 200T
Towing Pins	1
Stern Roller Dimension	200 T

FiFi/Dispersant System

Type	-
Fire Fighting Class	Class 1
Dispersant System	Veejet Nozzle
Dispersant Capacity Tank	28 m ³
Fire Pumps Capacity	2 x 1200 m ³ /hr

Accommodations

Total No. of Bunks	48 Persons
1 Man Cabins	6 Cabins
2 Man Cabins	5 Cabins
4 Man Cabins	8 Cabins
Hospital Room	1
Galley	1

Generators

Auxiliary Generators	4 x Caterpillar C32 (994KW)
Emergency Generator Make	Volvo Penta
Emergency Generator Capacity	D9 MG 1 x 230Kw 440v/3/60 Hz (1 x 308 BHP)

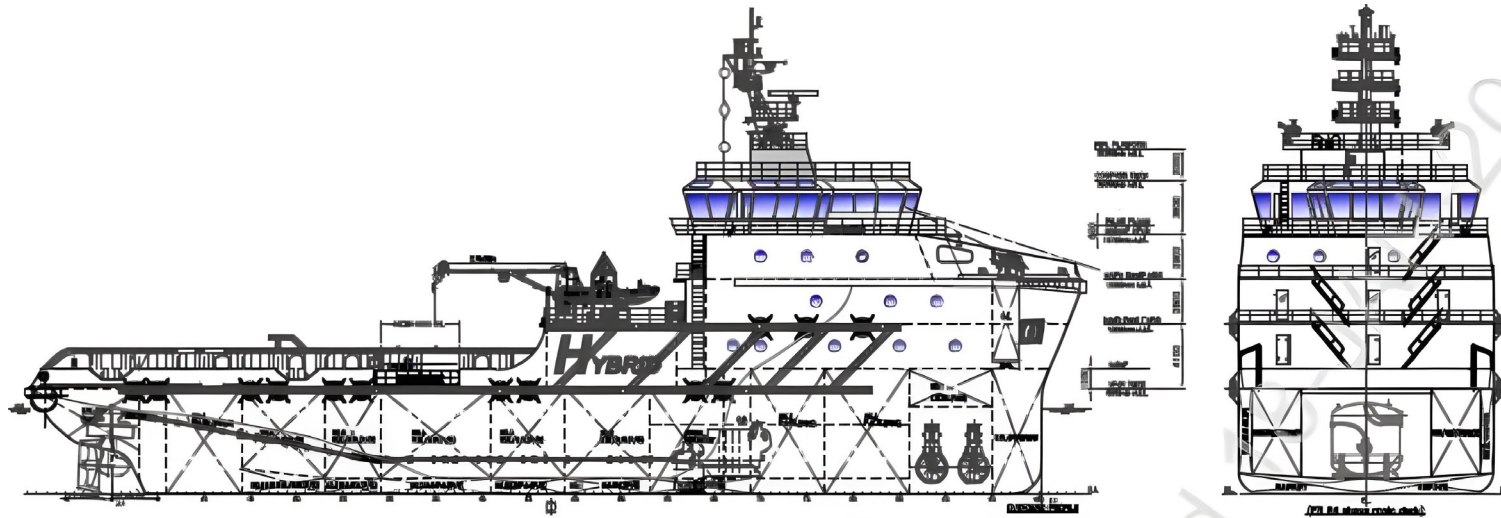
Cargo Discharge

Fuel Oil	100m ³ /Hr 90 m head
Cargo Fresh Water	100m ³ /Hr 90 m head
Drill Water	100m ³ /Hr 90 m head
Dirty Oil Pump	1 x 9.34m ³ /hr
Liquid Mud	100m ³ /Hr 7.5/15 bar
Bulk	2X20m ³ /min @5.6 bar

Electronics

- 1 - Navtex Japan Marina,NT-1800
- 1 - EPIRB McMurdo E5 Smartfind
- 2 - McMurdo S4 Rescue SART
- 3 - VHF Furuno, FM-8900S
- 3 - UHF Icom, IC-A210
- 1 - X-band Radar Furuno 014, MU190
- 1 - S Band Radar Furuno 014, MU190
- 1 - Autopilot Navico Simrad, AP 80
- 1 - GPS Furuno GP-150
- 2 - Echosounder Furuno FE-700
- 2 - Inmarsart Furuno FELCOM 18
- 1 - Electronic Fuel Monitoring System (Fueltrax)

Oshe Rewo AHTS 82T BP DP2



RECESSED ARRANGEMENT TO BE PROVIDED FOR DOORS OPENING INTO THE PASSAGE

AMPHIBIOUS HEAD

